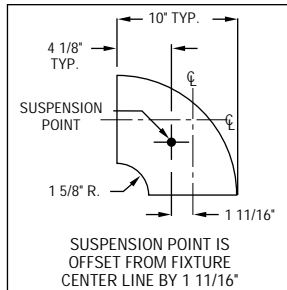


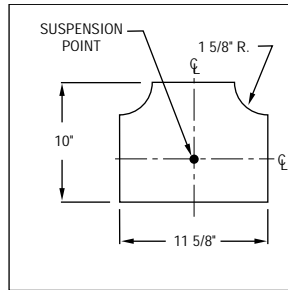
AE8300

Connector Specifications

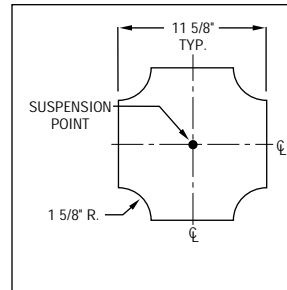
S P E C I F I C A T I O N S



90° Elbow



3-Way "T"



4-Way "X"

AE8300 Series 8 3/8" x 3" Ellipse.

Construction One piece .188" thick cast aluminum with internal joiner plates.

Finish Standard colors are baked powder coat (2.0 mil. minimum thickness) to assure aesthetics and durability.

H O W T O O R D E R

Standard connectors are 2-way, 3-way "T", and 4-way "X".
Optional variable degree connectors are also available.

Catalog Logic

All connectors should be specified and ordered as follows:

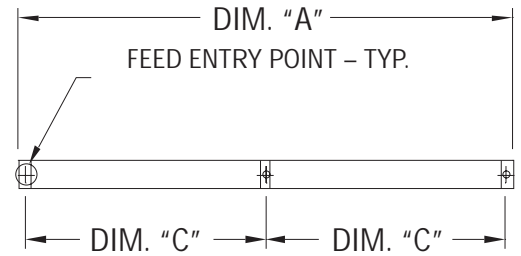
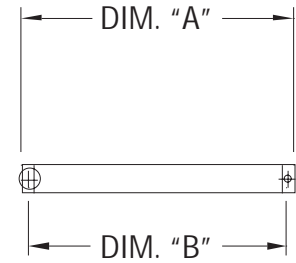
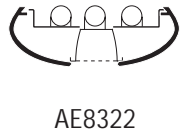
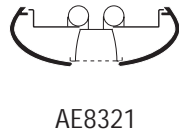
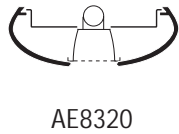
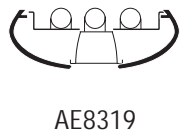
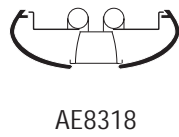
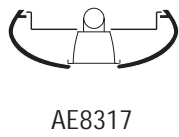
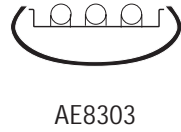
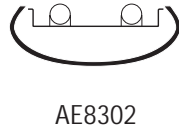
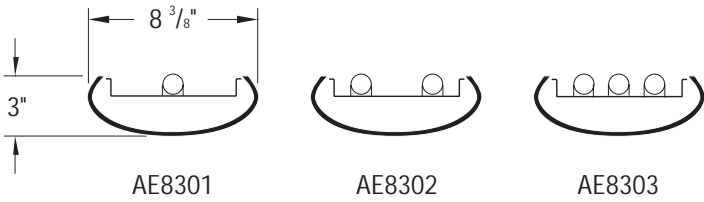
<p>SERIES</p>	<p>MOUNTING</p> <p>P = Stem C = Cable X = None</p>																						
<p>AE8300-L90-P-F01</p>																							
<p>CONNECTOR TYPE</p> <p>L90 = 90° Elbow T = 3-Way Connector X = 4-Way Connector L__° = (Specify angle)</p>	<p>Standard Finish</p> <p>F01 White Premium Finishes</p> <table border="0"> <tr> <td>F02 Ivory</td> <td>F13 Merlot</td> </tr> <tr> <td>F03 Stonewash</td> <td>F14 Red Skies</td> </tr> <tr> <td>F04 Camel</td> <td>F15 Lemon</td> </tr> <tr> <td>F05 Gray Day</td> <td>F16 Forest Hunter</td> </tr> <tr> <td>F06 Pebble Beach</td> <td>F17 Olive</td> </tr> <tr> <td>F07 Steel</td> <td>F18 Khaki</td> </tr> <tr> <td>F08 Gray Seal</td> <td>F19 Heather Green</td> </tr> <tr> <td>F09 Mocha</td> <td>F20 Blue Print</td> </tr> <tr> <td>F10 Bronzed</td> <td>F21 Reflex Blue</td> </tr> <tr> <td>F11 Black</td> <td>F22 Navy</td> </tr> <tr> <td>F12 Ultrasonic Clear</td> <td></td> </tr> </table> <p>FCC=Custom Color</p>	F02 Ivory	F13 Merlot	F03 Stonewash	F14 Red Skies	F04 Camel	F15 Lemon	F05 Gray Day	F16 Forest Hunter	F06 Pebble Beach	F17 Olive	F07 Steel	F18 Khaki	F08 Gray Seal	F19 Heather Green	F09 Mocha	F20 Blue Print	F10 Bronzed	F21 Reflex Blue	F11 Black	F22 Navy	F12 Ultrasonic Clear	
F02 Ivory	F13 Merlot																						
F03 Stonewash	F14 Red Skies																						
F04 Camel	F15 Lemon																						
F05 Gray Day	F16 Forest Hunter																						
F06 Pebble Beach	F17 Olive																						
F07 Steel	F18 Khaki																						
F08 Gray Seal	F19 Heather Green																						
F09 Mocha	F20 Blue Print																						
F10 Bronzed	F21 Reflex Blue																						
F11 Black	F22 Navy																						
F12 Ultrasonic Clear																							



AE8300

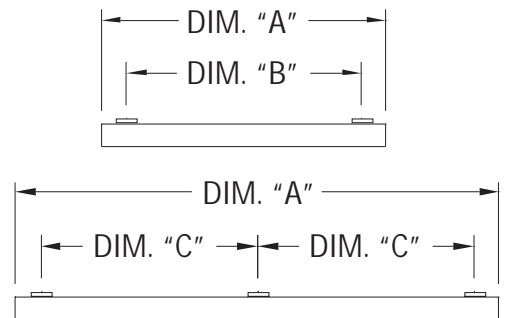
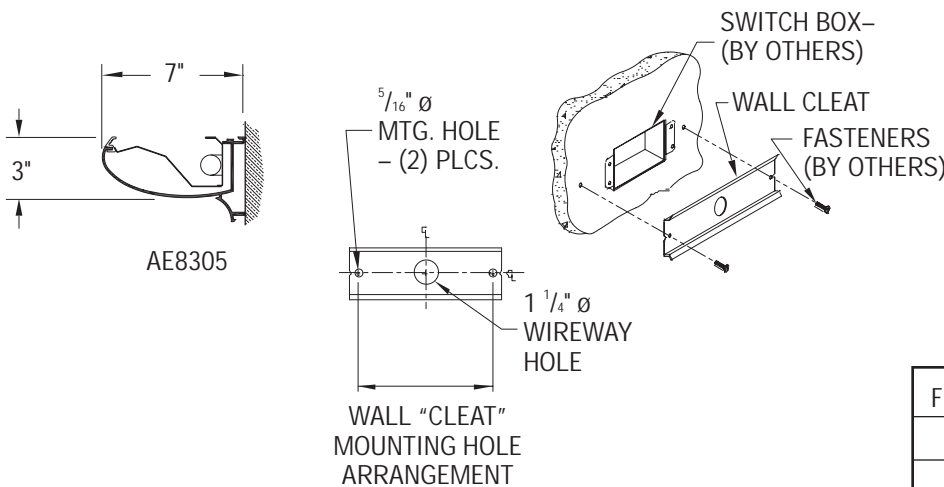
Standard Fixture Lengths and Mounting Centers.

Stem & Cable – Indirect & Indirect/Direct Configurations



FIXTURE LENGTH	MOUNTING CENTERS	
	Dim "B"	Dim "B"
4' - 4 3/8"	4' - 2"	—
8' - 4 3/8"	8' - 2"	—
12' - 4 3/8"	12' - 2"	—
16' - 6 3/8"	—	8' - 2"

Wall Mount Configurations



FIXTURE LENGTH	MOUNTING CENTERS	
	Dim "B"	Dim "B"
4' - 0 3/8"	3' - 0"	—
8' - 0 3/8"	7' - 0"	—
12' - 0 3/8"	—	5' - 6"
16' - 0 3/8"	—	7' - 6"

