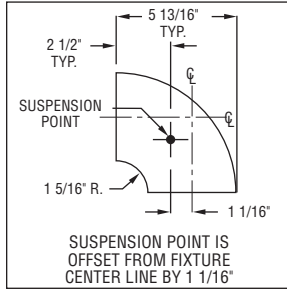


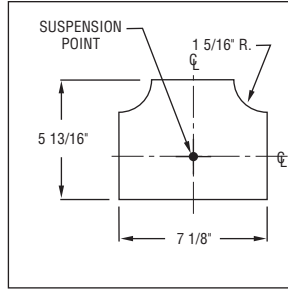
AR400

Connector Specifications

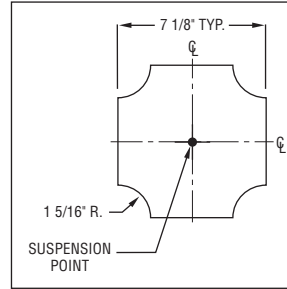
S P E C I F I C A T I O N S



90° Elbow



3-Way "T"



4-Way "X"

AR400 Series 4 1/2" Round.

Construction One piece .250" thick cast aluminum with internal joiner plates.

Finish Standard and premium finishes are baked powder coat electrostatically applied (2.0 mil. minimum thickness) to assure aesthetics and durability.

H O W T O O R D E R

Standard connectors are 2-way, 3-way "T", and 4-way "X".
Optional variable degree connectors are also available.

Catalog Logic

All connectors should be specified and ordered as follows:

SERIES

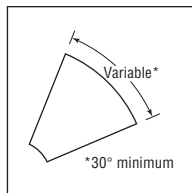
Mounting

CN = Cable (Non-Tbar) Fully Adjustable (36° Standard)
P = Rigid Stem (Up to 48° Standard)
K = Swivel Stem (Up to 48° Standard)

AR400-L90-CN-F01G

CONNECTOR TYPE

L90 = 90° Elbow
T = 3-Way Connector
X = 4-Way Connector
L__° = (Specify angle)



Standard Finish

F01M Matte White

F01G Gloss White

Premium Finishes

F02 Ivory

F03 Stonewash

F04 Camel

F05 Gray Day

F06 Pebble Beach

F07 Steel

F08 Gray Seal

F09 Mocha

F10 Bronzed

F11 Black

F12 Ultrasonic Clear

F13 Merlot

F14 Red Skies

F15 Lemon

F16 Forest Hunter

F17 Olive

F18 Khaki

F19 Heather Green

F20 Blue Print

F21 Reflex Blue

F22 Navy

FCC Custom Color

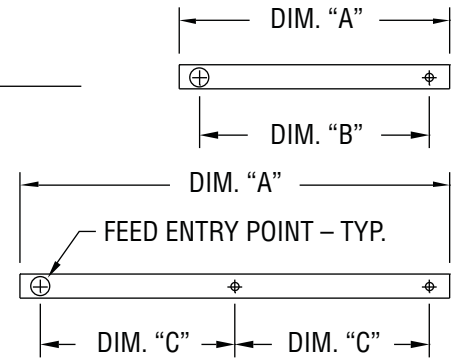
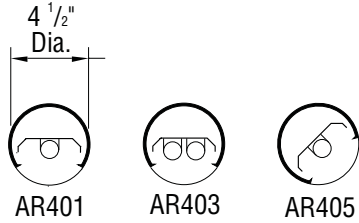
To view Wood Grain, Marble and Granite Finishes on our Website see "Products"->"Specialty Finishes".



AR400 Series (T8 Lamps)*

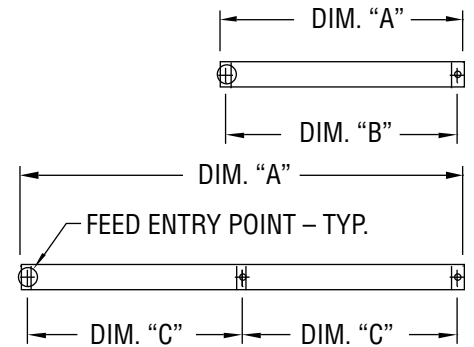
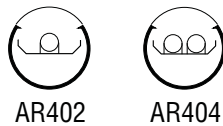
Standard Fixture Lengths and Mounting Centers.**

Stem & Cable – Direct Configurations



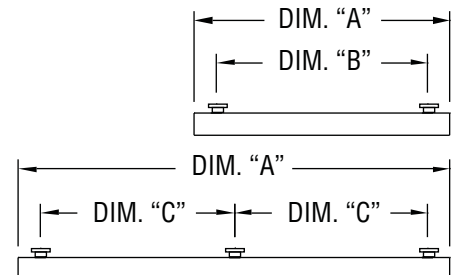
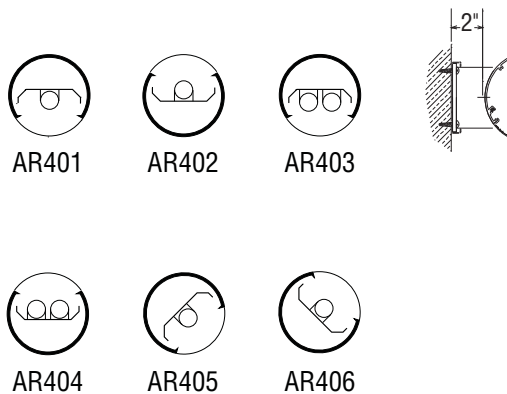
FIXTURE LENGTH	MOUNTING CENTERS	
	Dim "B"	Dim "C"
4' - 0 3/8"	3' - 0"	—
8' - 0 3/8"	7' - 0"	—
12' - 0 3/8"	11' - 0"	—

Stem & Cable – Indirect Configurations



FIXTURE LENGTH	MOUNTING CENTERS	
	Dim "B"	Dim "C"
4' - 4 3/8"	4' - 2"	—
8' - 4 3/8"	8' - 2"	—
12' - 4 3/8"	12' - 2"	—

Wall Mount Configurations



FIXTURE LENGTH	MOUNTING CENTERS	
	Dim "B"	Dim "C"
4' - 0 3/8"	3' - 0"	—
8' - 0 3/8"	7' - 0"	—
12' - 0 3/8"	—	5' - 6"

*Note: Contact factory for data on fixtures for T5 or T5HO lamps.

**Note: Contact factory for Ceiling Mount, Telescoping End Mount and Rotatable Mount Data.

PAL RESERVES THE RIGHT TO CHANGE PRODUCT DESIGN AND SPECIFICATIONS. CONTACT FACTORY FOR MOST RECENT PRODUCT INFORMATION.

