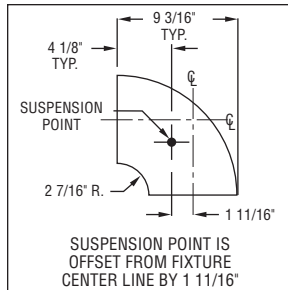


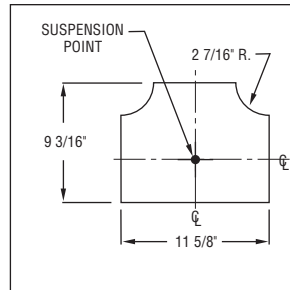
AR600

Connector Specifications

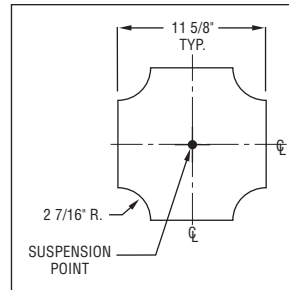
S P E C I F I C A T I O N S



90° Elbow



3-Way "T"



4-Way "X"

Cast connectors are not available for the AR622 and AR623. Consult the factory for available connector options.

AR600 Series 6 3/4" Round.

Construction One piece .188" thick cast aluminum with internal joiner plates.

Finish Standard and premium finishes are baked powder coat electrostatically applied (2.0 mil. minimum thickness) to assure aesthetics and durability.

H O W T O O R D E R

Standard connectors are 2-way, 3-way "T", and 4-way "X".
Optional variable degree connectors are also available.

Catalog Logic

All connectors should be specified and ordered as follows:

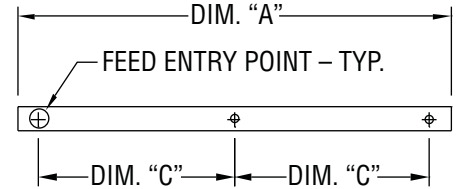
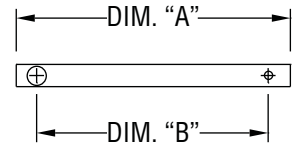
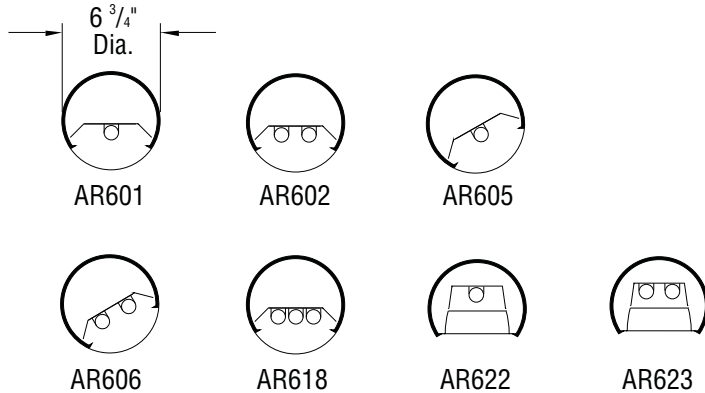
<p>SERIES</p>	<p>Mounting CN = Cable (Non-Tbar) Fully Adjustable (36° Standard) P = Rigid Stem (Up to 48° Standard) K = Swivel Stem (Up to 48° Standard)</p>
<p>A R 6 0 0 - L 9 0 - C N - F 0 1 G</p>	
<p>CONNECTOR TYPE L90 = 90° Elbow T = 3-Way Connector X = 4-Way Connector L_° = (Specify angle)</p>	<p>Standard Finish F01M Matte White F01G Gloss White Premium Finishes F02 Ivory F13 Merlot F03 Stonewash F14 Red Skies F04 Camel F15 Lemon F05 Gray Day F16 Forest Hunter F06 Pebble Beach F17 Olive F07 Steel F18 Khaki F08 Gray Seal F19 Heather Green F09 Mocha F20 Blue Print F10 Bronzed F21 Reflex Blue F11 Black F22 Navy F12 Ultrasonic Clear FCC Custom Color</p>
	<p>To view Wood Grain, Marble and Granite Finishes on our Website see "Products"->"Specialty Finishes".</p>



AR600 Series (T8 Lamps)*

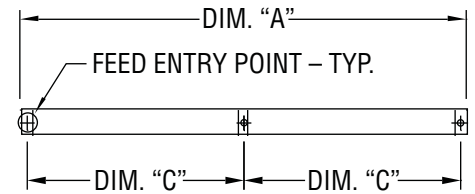
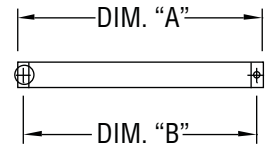
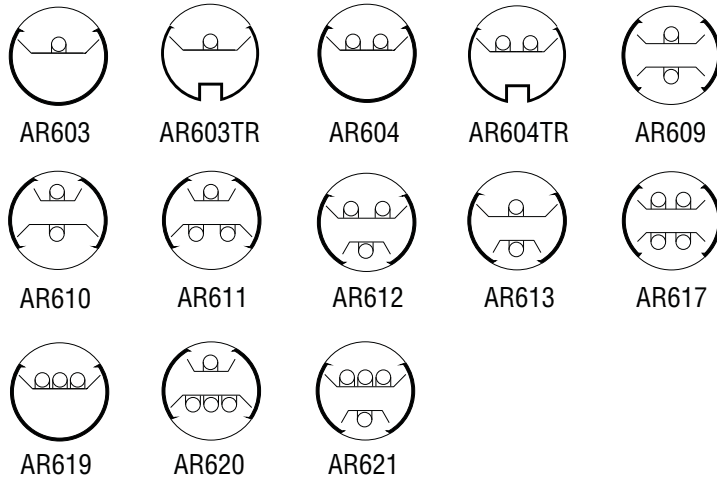
Standard Fixture Lengths and Mounting Centers.**

Stem & Cable – Direct Configurations



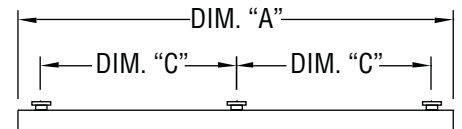
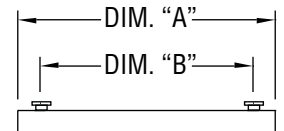
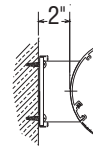
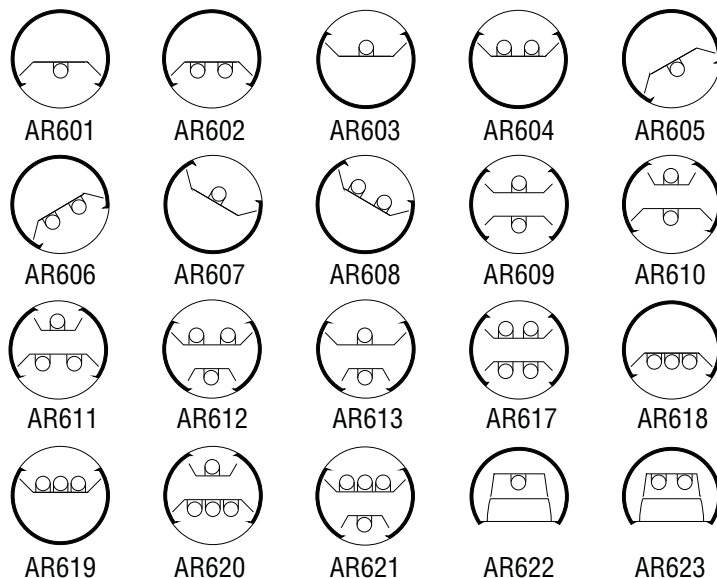
FIXTURE LENGTH	MOUNTING CENTERS	
	Dim "B"	Dim "C"
Dim "A"	Dim "B"	Dim "C"
4' - 0 3/8"	3' - 0"	—
8' - 0 3/8"	7' - 0"	—
12' - 0 3/8"	11' - 0"	—

Stem & Cable – Indirect & Indirect/Direct Configurations



FIXTURE LENGTH	MOUNTING CENTERS	
	Dim "B"	Dim "C"
Dim "A"	Dim "B"	Dim "C"
4' - 4 3/8"	4' - 2"	—
8' - 4 3/8"	8' - 2"	—
12' - 4 3/8"	12' - 2"	—

Wall Mount – All Configurations



FIXTURE LENGTH	MOUNTING CENTERS	
	Dim "B"	Dim "C"
Dim "A"	Dim "B"	Dim "C"
4' - 0 3/8"	3' - 0"	—
8' - 0 3/8"	7' - 0"	—
12' - 0 3/8"	—	5' - 6"

PAL RESERVES THE RIGHT TO CHANGE PRODUCT DESIGN AND SPECIFICATIONS. CONTACT FACTORY FOR MOST RECENT PRODUCT INFORMATION.



*Note: Contact factory for data on fixtures for T5 or T5HO lamps.

**Note: Contact factory for Ceiling Mount, Telescoping End Mount and Rotatable Mount Data.

Precision Architectural Lighting 4830 Timber Creek Drive Houston, Texas 77017

Tel 713.946.4343 Fax 713.946.4441 www.pal-lighting.com