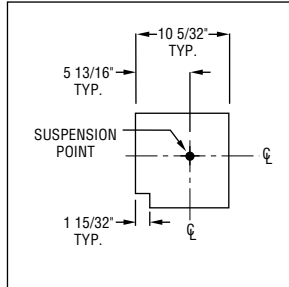


### S P E C I F I C A T I O N S



90° Elbow

**AV900 Series** 9" x 4 1/2" "V".

**Construction** One piece .188" thick cast aluminum with internal joiner plates.

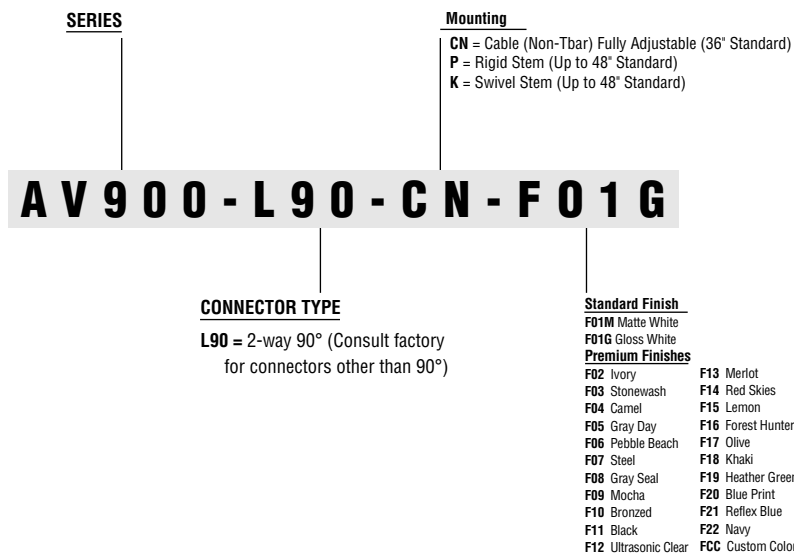
**Finish** Standard and premium finishes are baked powder coat electrostatically applied (2.0 mil. minimum thickness) to assure aesthetics and durability.

### H O W T O O R D E R

Standard connector is 2-way (90° elbow)

#### Catalog Logic

All connectors should be specified and ordered as follows:



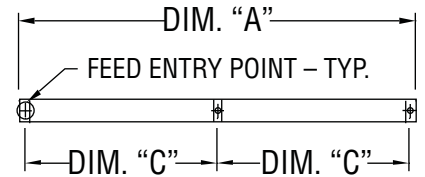
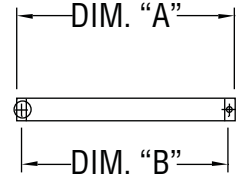
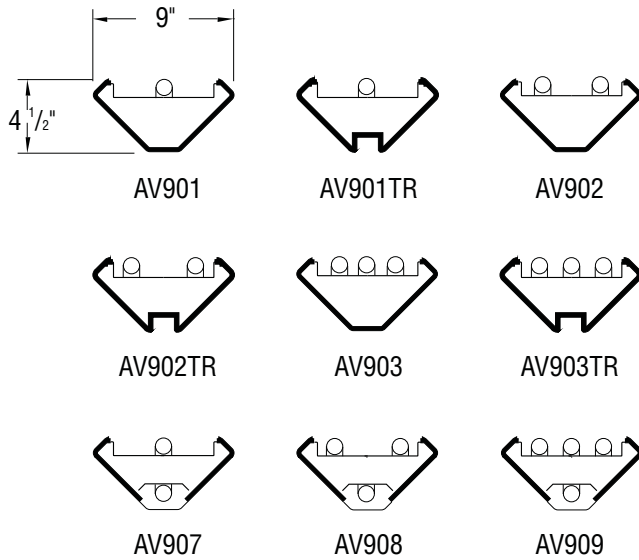
To view Wood Grain, Marble and Granite Finishes on our Website see "Products"--"Specialty Finishes".



# AV900 Series (T8 Lamps)\*

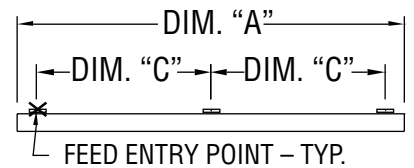
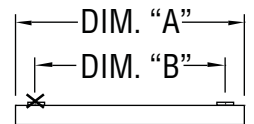
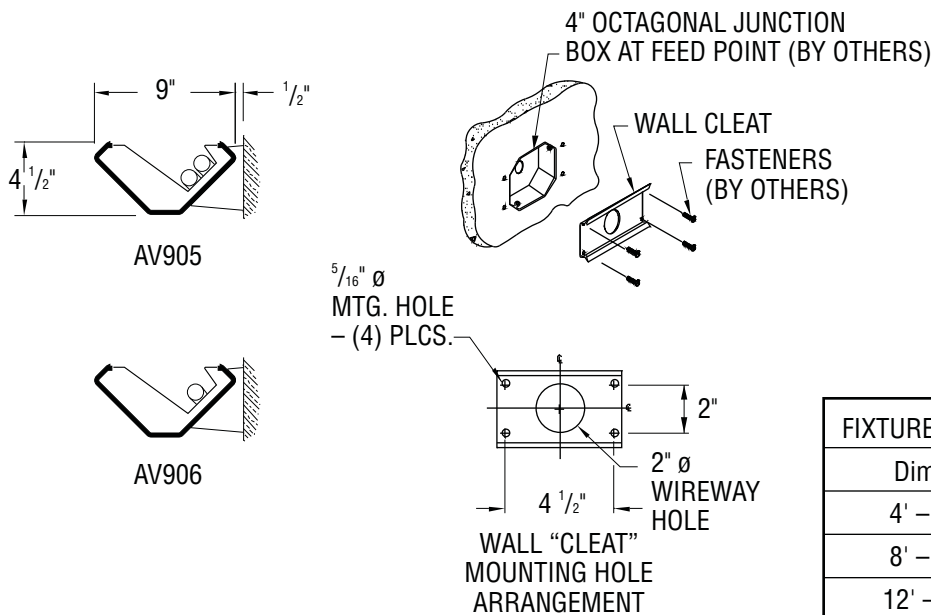
## Standard Fixture Lengths and Mounting Centers.

### Stem & Cable – Indirect & Indirect/Direct Configurations



FIXTURE LENGTH	MOUNTING CENTERS	
	Dim "B"	Dim "C"
4' - 4 <sup>3</sup> / <sub>8</sub> "	4' - 2"	—
8' - 4 <sup>3</sup> / <sub>8</sub> "	8' - 2"	—
12' - 4 <sup>3</sup> / <sub>8</sub> "	12' - 2"	—

## Wall Mount Configurations



FIXTURE LENGTH	MOUNTING CENTERS	
	Dim "B"	Dim "C"
4' - 0 <sup>3</sup> / <sub>8</sub> "	3' - 0"	—
8' - 0 <sup>3</sup> / <sub>8</sub> "	7' - 0"	—
12' - 0 <sup>3</sup> / <sub>8</sub> "	—	5' - 6"

PAL RESERVES THE RIGHT TO CHANGE PRODUCT DESIGN AND SPECIFICATIONS. CONTACT FACTORY FOR MOST RECENT PRODUCT INFORMATION.



\*Note: Contact factory for data on fixtures for T5 or T5HO lamps.