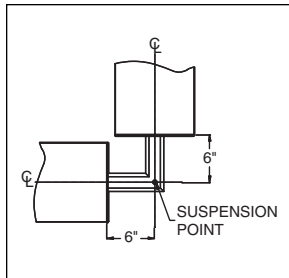
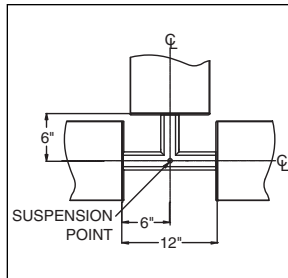


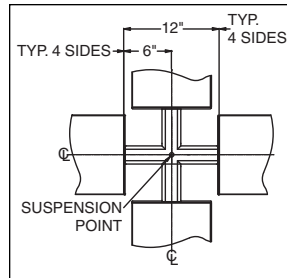
S P E C I F I C A T I O N S



90° Elbow



3-Way "T"



4-Way "X"

Luminta Series 10" x 2 11/16"

Construction One piece .156" thick cast aluminum.

Finish Standard and premium finishes are baked powder coat electrostatically applied (2.0 mil. minimum thickness) to assure aesthetics and durability.

H O W T O O R D E R

Standard Connectors are 2-way 90°, 3-way "T", and 4-way "X".

Catalog Logic

All connectors should be specified and ordered as follows:

<p><u>Series</u></p>	<p><u>Mounting</u></p> <p>CN = Cable (Non-Tbar) Fully Adjustable (36" Standard) P = Rigid Stem (Up to 48" Standard) K = Swivel Stem (Up to 48" Standard)</p>	<p>*Tbar mounting is not applicable when utilizing Connectors to form patterns.</p>
<p>L M S - L 9 0 - C N - F 0 1 M</p>		

Connector Type

- L90**
90° Connector
- T**
3-Way Connector
- X**
4-Way Connector

Standard Finish

- F01M** Matte White
- F01G** Gloss White
- Premium Finishes**
- F02** Ivory
- F03** Stonewash
- F04** Camel
- F05** Gray Day
- F06** Pebble Beach
- F07** Steel
- F08** Gray Seal
- F09** Mocha
- F10** Bronzed
- F11** Black
- F12** Ultrasonic Clear
- F13** Merlot
- F14** Red Skies
- F15** Lemon
- F16** Forest Hunter
- F17** Olive
- F18** Khaki
- F19** Heather Green
- F20** Blue Print
- F21** Reflex Blue
- F22** Navy
- FCC** Custom Color

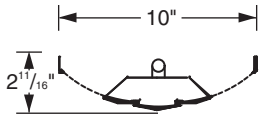
To view Wood Grain, Marble and Granite Finishes on our Website see "Products"--"Specialty Finishes".



Luminata Series

Standard Fixture Lengths and Mounting Centers

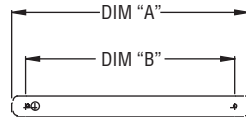
Stem & Cable – Indirect Configurations



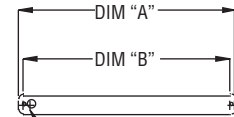
LMS01-T5HO



LMS02-T8



EXTENDED END OPTION



FEED POINT - TYP.

SCULPTED END OPTION



LMS02-T5HO



LMS03-T8

FIXTURE LENGTH DIM. "A"	MOUNTING CENTERS DIM. "B"
60 1/2"	48"
108 1/2"	96"
156 1/2"	144"

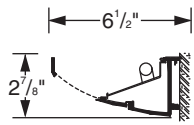
FIXTURE LENGTH DIM. "A"	MOUNTING CENTERS DIM. "B"
48 1/2"	48"
96 1/2"	96"
144 1/2"	144"



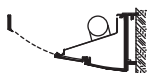
LMS03-T5HO



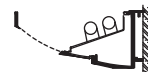
LMS04-T8



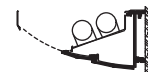
LMP01-T5HO



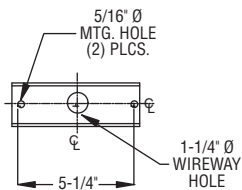
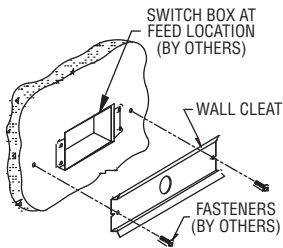
LMP01-T8



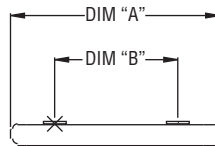
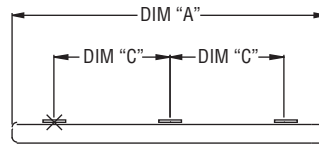
LMP02-T5HO



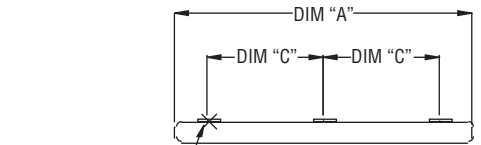
LMP02-T8



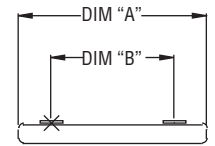
WALL CLEAT
Mounting Hole Arrangement



EXTENDED END OPTION



FEED ENTRY - TYP.



SCULPTED END OPTION

FIXTURE LENGTH DIM. "A"	MOUNTING CENTERS	
	DIM. "B"	DIM. "C"
60 1/2"	36"	—
108 1/2"	84"	—
156 1/2"	—	66"

FIXTURE LENGTH DIM. "A"	MOUNTING CENTERS	
	DIM. "B"	DIM. "C"
48 1/2"	36"	—
96 1/2"	84"	—
144 1/2"	—	66"

PAL RESERVES THE RIGHT TO CHANGE PRODUCT DESIGN AND SPECIFICATIONS. CONTACT FACTORY FOR MOST RECENT PRODUCT INFORMATION.

