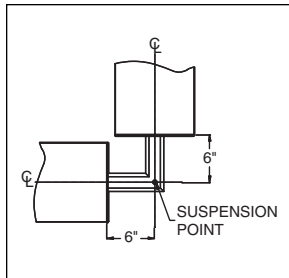
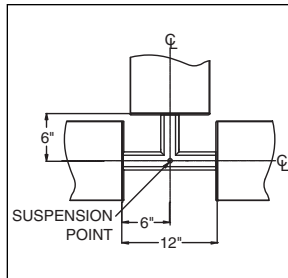


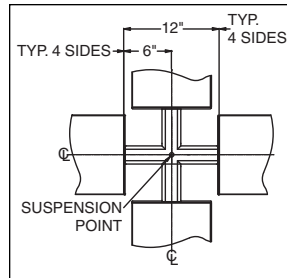
### S P E C I F I C A T I O N S



90° Elbow



3-Way "T"



4-Way "X"

**Luminta III Series** 10" x 2 11/16"

**Construction** One piece .156" thick cast aluminum.

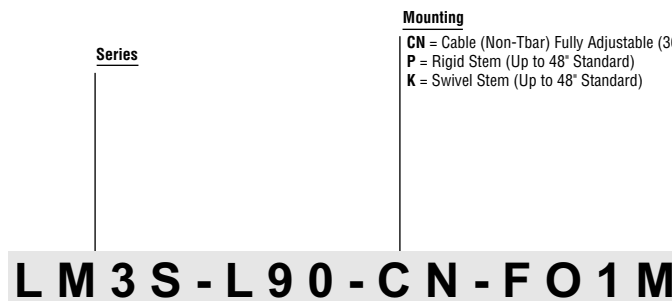
**Finish** Standard and premium finishes are baked powder coat electrostatically applied (2.0 mil. minimum thickness) to assure aesthetics and durability.

### H O W T O O R D E R

Standard Connectors are 2-way 90°, 3-way "T", and 4-way "X".

#### Catalog Logic

All connectors should be specified and ordered as follows:



\*Tbar mounting is not applicable when utilizing Connectors to form patterns.

Connector Type

**L90**  
90° Connector  
**T**  
3-Way Connector  
**X**  
4-Way Connector

Standard Finish

**F01M** Matte White  
**F01G** Gloss White  
**Premium Finishes**  
**F02** Ivory      **F13** Merlot  
**F03** Stonewash      **F14** Red Skies  
**F04** Camel      **F15** Lemon  
**F05** Gray Day      **F16** Forest Hunter  
**F06** Pebble Beach      **F17** Olive  
**F07** Steel      **F18** Khaki  
**F08** Gray Seal      **F19** Heather Green  
**F09** Mocha      **F20** Blue Print  
**F10** Bronzed      **F21** Reflex Blue  
**F11** Black      **F22** Navy  
**F12** Ultrasonic Clear      **FCC** Custom Color

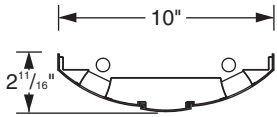
To view Wood Grain, Marble and Granite Finishes on our Website see "Products"--"Specialty Finishes".



# Luminata III Series

## Standard Fixture Lengths and Mounting Centers

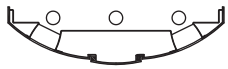
### Stem & Cable – Indirect Configurations



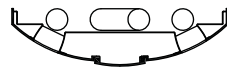
LM3S02-T5 (Or T5H0)



LM3S02-T8



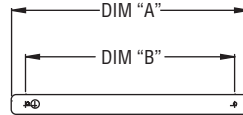
LM3S03-T5 (Or T5H0)



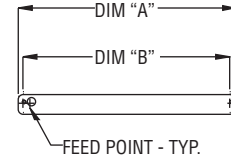
LM3S03-T8



LM3S04-T8



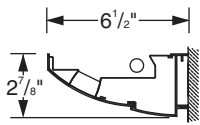
EXTENDED END OPTION



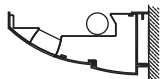
SCULPTED END OPTION

FIXTURE LENGTH DIM. "A"	MOUNTING CENTERS DIM. "B"
60 1/2"	48"
108 1/2"	96"
156 1/2"	144"

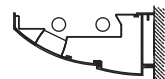
FIXTURE LENGTH DIM. "A"	MOUNTING CENTERS DIM. "B"
48 1/2"	48"
96 1/2"	96"
144 1/2"	144"



LM3P01-T5 (Or T5H0)



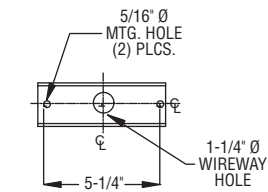
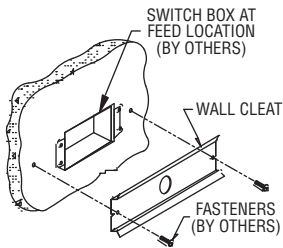
LM3P01-T8



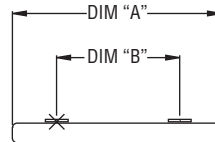
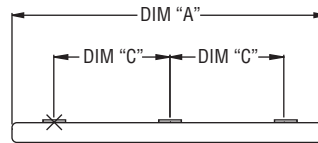
LM3P02-T5 (Or T5H0)



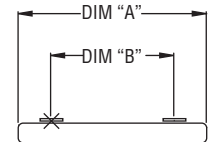
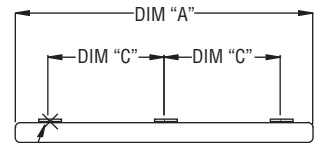
LM3P02-T8



WALL CLEAT  
Mounting Hole Arrangement



EXTENDED END OPTION



SCULPTED END OPTION

FIXTURE LENGTH DIM. "A"	MOUNTING CENTERS	
	DIM. "B"	DIM. "C"
60 1/2"	36"	—
108 1/2"	84"	—
156 1/2"	—	66"

FIXTURE LENGTH DIM. "A"	MOUNTING CENTERS	
	DIM. "B"	DIM. "C"
48 1/2"	36"	—
96 1/2"	84"	—
144 1/2"	—	66"

PAL RESERVES THE RIGHT TO CHANGE PRODUCT DESIGN AND SPECIFICATIONS. CONTACT FACTORY FOR MOST RECENT PRODUCT INFORMATION.

