

Round Series

Catalog Number

Type

Project Name

Shown with Linear Prismatic Lens



Shown with White Radial Baffle

AR405 • AR406

4 1/2" Round Asymmetric Indirect and Direct
110° Aperture
(T8, T5 or T5HO Lamps)

S P E C I F I C A T I O N S

Housing

One-piece .100" thick extruded aluminum. Die-cast aluminum end plates are secured with no visible fasteners. Standard lengths are 4', 8' and 12'. Provisions may be made for patterns and continuous rows of any length.

Finish

Standard and premium finishes are baked powder coat electrostatically applied (2.0 mil minimum thickness) to assure aesthetics and durability. Standard finish for stems and canopies is white.

Optical Controls

■ (LP) Clear extruded 100% DR acrylic linear prismatic lens

■ (BW) One-piece white aluminum radial baffle

Reflectors

Die-formed from .020" thick aluminum and finished with a high reflectance white enamel.

Ballast

Standard ballasts for T5 and T5HO lamps are UL/CUL listed, Class P, HPF, electronic, universal 120/277volt, programmed rapid start with <10% THD.

Standard ballasts for T8 lamps are UL/CUL listed, Class P, HPF, electronic, universal 120/277volt, instant start with <10% THD.

Circuitry

All fixtures are factory pre-wired for a single circuit. Provision for multiple switching/circuiting is optional.

Controls

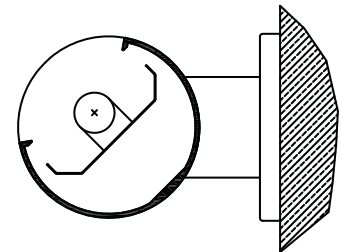
Contact factory for control by Occupancy Sensors, Photo Controls and Daylight Harvesting.

Certification

All fixtures are UL/CUL listed for use in 'Dry Applications'. 'Damp Location' is optional.



AR405



AR406
(Wall Mount Only)

Standard Lengths:
4', 8' and 12'

Series
AR405
AR406

Mounting

CN = Cable (Non-Tbar) Fully Adjustable (36" Standard)
P = Rigid Stem (Up to 48" Standard)
K = Swivel Stem (Up to 48" Standard)
J = Ceiling
W = Wall
T = Telescoping End

AR405-12-CN-LP-F01M-V-T8-[]

Optical Controls

LP
Linear Prismatic Lens
BW
White Radial Baffle

Standard Finishes

F01M Matte White
F01G Gloss White
Premium Finishes
F02 Ivory
F03 Stonewash
F04 Camel
F05 Gray Day
F06 Pebble Beach
F07 Steel
F08 Gray Seal
F09 Mocha
F10 Bronzed
F11 Black
F12 Ultrasonic Clear
F13 Merlot
F14 Red Skies
F15 Lemon
F16 Forest Hunter
F17 Olive
F18 Khaki
F19 Heather Green
F20 Blue Print
F21 Reflex Blue
F22 Navy
FCC Custom Color

Voltage

120
277
347

Lamp Type

T8
T5
T5HO

Options

NLCKT
Separate Night Light Circuit
EMCKT
Separate Emergency Circuit
EBPL
Emergency Battery Pack
(635-700 Lumens)
ERPH
Emergency Battery Pack
(975-1325 Lumens)

Dim
Dimming

FS
Fused Ballasts

GTD
Generator Transfer Device

To view Wood Grain, Marble and Granite Finishes on our Website see "Products"- "Specialty Finishes".



AR405

4 1/2" Round Asymmetric Direct

Linear Prismatic Lens

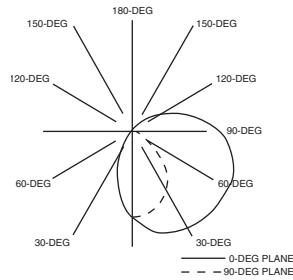
Catalog Number: AR405-4-X-LP-F01-120-T12

Report Number: LTL #00589.ies

Luminaire Description: Extruded Aluminum Housing, White Enamel Reflector

Lamps: One F40T12/CW rated at 3150 lumens

Spacing Criteria: 0° 90° 180°
1.9 1.2 .7



CANDELA DISTRIBUTION

LUMENS

	0.0	22.5	45.0	67.5	90.0	112.5	135.0	157.5	180.0
0	408	408	408	408	408	408	408	408	408
5	439	444	435	422	404	393	381	374	363
15	499	495	469	432	384	346	312	287	269
25	523	513	479	423	349	288	232	199	181
35	539	522	467	393	295	218	161	130	113
45	543	518	448	342	228	152	105	77	62
55	542	507	414	284	151	95	59	38	28
65	528	487	375	222	79	50	29	17	12
75	500	453	325	149	26	18	12	8	7
85	454	397	258	84	4	4	6	5	4
90	416	360	226	64	1	2	4	4	3
95	377	323	197	52	0	2	3	3	2
105	289	241	144	40	0	2	2	2	1
115	192	158	94	28	0	1	2	2	1
125	116	96	56	16	0	0	1	1	0
135	64	50	29	10	0	0	0	1	0
145	28	23	15	8	0	0	0	0	0
155	13	12	8	5	0	0	0	0	0
165	7	6	6	0	0	0	0	0	0
175	0	0	0	0	0	0	0	0	0
180	0	0	0	0	0	0	0	0	0

COEFFICIENTS OF UTILIZATION - ZONAL CAVITY METHOD

Effective Floor Cavity Reflectance 0.20

RC	80			70			50			30			10			0		
RW	70	50	30	10	70	50	30	10	50	30	10	50	30	10	50	30	10	0
0	62	62	62	62	59	59	59	59	55	55	55	51	51	51	47	47	47	45
1	55	52	49	47	53	50	47	45	46	44	42	42	41	39	39	38	37	35
2	50	45	41	37	47	43	39	36	40	36	34	36	34	32	34	32	30	28
3	45	39	34	31	43	38	33	30	35	31	28	32	29	27	30	27	25	24
4	41	34	30	26	39	33	29	25	31	27	24	28	25	23	26	24	21	20
5	38	30	25	22	36	29	25	21	27	23	20	25	22	19	23	20	18	17
6	34	27	22	19	33	26	21	18	24	20	17	22	19	16	21	18	16	14
7	32	24	19	16	30	23	19	16	22	18	15	20	17	14	19	16	14	12
8	29	22	17	14	28	21	17	14	20	16	13	18	15	12	17	14	12	11
9	27	20	15	12	26	19	15	12	18	14	11	16	13	11	15	12	10	9
10	25	18	14	11	24	17	13	10	16	12	10	15	12	9	14	11	9	8

NOTE:

The Zonal Cavity calculation technique is accurate when luminaires with symmetric candela distributions are employed and when the luminaires are located symmetrically throughout the room. This unit has special characteristics and therefore the Coefficients of Utilization should be used with caution. Consult your local factory representative for specific application assistance.

AR406

4 1/2" Round Asymmetric Indirect

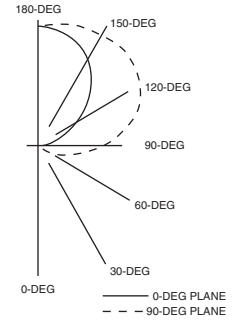
Linear Prismatic Lens

Catalog Number: AR406-4-X-LP-F01-120-T12

Report Number: LTL #00590.ies

Luminaire Description: Extruded Aluminum Housing, White Enamel Reflector

Lamps: One F40T12/CW rated at 3100 lumens



CANDELA DISTRIBUTION

LUMENS

	0.0	22.5	45.0	67.5	90.0	112.5	135.0	157.5	180.0
0	0	0	0	0	0	0	0	0	0
5	0	0	0	0	0	0	0	0	0
15	2	1	1	0	0	0	0	0	0
25	3	3	2	2	0	0	0	0	0
35	8	7	4	2	0	0	0	0	0
45	16	13	8	3	0	0	0	0	0
55	36	31	17	4	0	0	0	0	0
65	78	67	41	10	0	0	1	1	2
75	135	120	79	21	0	1	3	3	4
85	218	195	130	39	0	2	5	6	6
90	266	239	161	49	2	4	9	8	9
95	312	282	191	67	6	11	15	12	12
105	394	360	262	131	39	39	37	29	26
115	460	427	337	218	109	88	76	62	55
125	497	471	395	298	199	155	128	109	101
135	517	495	435	363	288	237	199	172	166
145	523	506	464	416	364	318	284	256	246
155	519	510	487	453	422	388	359	341	335
165	512	508	494	477	463	444	424	413	408
175	496	495	491	487	484	480	474	470	469
180	487	487	487	487	487	487	487	487	487

COEFFICIENTS OF UTILIZATION - ZONAL CAVITY METHOD

Effective Floor Cavity Reflectance 0.20

RC	80			70			50			30			10			0		
RW	70	50	30	10	70	50	30	10	50	30	10	50	30	10	50	30	10	0
0	51	51	51	51	44	44	44	44	32	32	32	20	20	20	9	9	9	4
1	46	43	41	39	39	37	35	34	26	25	24	16	15	15	7	7	6	2
2	41	37	34	31	35	32	29	27	23	21	19	14	13	12	6	5	5	1
3	37	32	29	26	32	28	25	22	20	18	16	12	11	10	5	4	4	1
4	34	29	24	21	29	25	21	19	17	15	13	11	9	8	4	3	3	0
5	31	25	21	18	27	22	18	16	15	13	11	9	8	7	4	3	2	0
6	29	22	18	15	25	19	16	13	14	11	10	8	7	6	3	3	2	0
7	26	20	16	13	23	17	14	12	12	10	8	7	6	5	3	2	2	0
8	24	18	14	11	21	16	12	10	11	9	7	7	5	4	3	2	2	0
9	23	16	13	10	19	14	11	9	10	8	6	6	5	4	2	2	1	0
10	21	15	11	9	18	13	10	8	9	7	6	6	4	3	2	2	1	0

NOTE:

The Zonal Cavity calculation technique is accurate when luminaires with symmetric candela distributions are employed and when the luminaires are located symmetrically throughout the room. This unit has special characteristics and therefore the Coefficients of Utilization should be used with caution. Consult your local factory representative for specific application assistance.

