

Paladia Suspended Series™

Catalog Number	Type
Project Name	



PLDS02

7" x 2 1/2" Indirect/Direct
(T5 or T5HO Lamps)
Stepped, Rounded or
Classical Profile

S P E C I F I C A T I O N S

Housing

Two-piece .060" thick extruded aluminum. Die-cast aluminum end plates are secured with no visible fasteners. Standard lengths are 4' and 8'. Provisions may be made for patterns and continuous rows of any length.

Finish

Standard and premium finishes are baked powder coat electrostatically applied (2.0 mil minimum thickness) to assure aesthetics and durability. Standard finish for cable canopies is white.

Indirect Optical Control

- (OP) Open
- (DC) Clear extruded 100% DR acrylic dust cover

Direct Optical Control

- (PB) 1 3/8" deep specular parabolic baffle with blades on 2 1/2" centers
- (PBW) 1 3/8" deep white aluminum parabolic baffle with blades on 2 1/2" centers

Reflectors

Die-formed from .020" thick high reflectance specular aluminum.

Ballast

Standard ballasts for T5 and T5HO lamps are UL/CUL listed, Class P, HPF, electronic, universal 120/277volt, programmed rapid start with <10% THD.

Circuitry

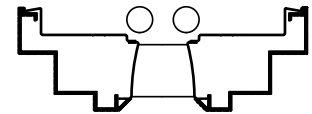
All fixtures are factory pre-wired for a single circuit. Provision for multiple switching/circuiting is optional.

Controls

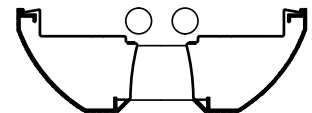
Contact factory for control by Occupancy Sensors, Photo Controls and Daylight Harvesting.

Certification

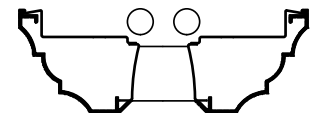
All fixtures are UL/CUL listed for use in 'Dry Applications'. 'Damp Location' is optional.



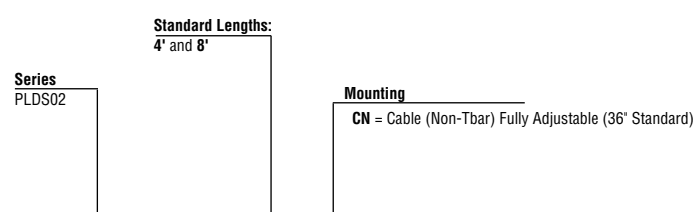
PLDS02-ST



PLDS02-RD



PLDS02-CL



Note: For companion Wall Mounts see Paladia Perimeter Section.

PLDS02-RD-8-CN-OP/PB-F01M-V-T5HO-[]

Style	Indirect Optical Control	Direct Optical Control	Standard Finishes	Voltage	Lamp Type	Options
CL Classical	OP Open	PB Specular Parabolic Baffle	F01M Matte White F01G Gloss White Premium Finishes	120	T5	SS-L/R (Left/Right) Lamp Row Switching (Common Neutral Utilized)
RD Rounded	DC Clear Dust Cover (N/A for T5HO)	PBW White Parabolic Baffle	F02 Ivory F03 Stonewash F04 Camel F05 Gray Day F06 Pebble Beach F07 Steel F08 Gray Seal F09 Mocha F10 Bronzed F11 Black F12 Ultrasonic Clear	277 347	T5HO	NLCKT Separate Night Light Circuit EMCKT Separate Emergency Circuit EBPL Emergency Battery Pack (635-700 Lumens) EBPH Emergency Battery Pack (975-1325 Lumens)
ST Stepped			F13 Merlot F14 Red Skies F15 Lemon F16 Forest Hunter F17 Olive F18 Khaki F19 Heather Green F20 Blue Print F21 Reflex Blue F22 Navy FCC Custom Color			Dim Dimming FS Fused Ballasts GTD Generator Transfer Device AO White Acrylic Baffle Overlay (For Lowest Brightness and Highest Efficiency)

To view Wood Grain, Marble and Granite Finishes on our Website see "Products"-"Specialty Finishes".



PLDS02

7" x 2 1/2" Indirect/Direct (T5HO Lamps)

Specular Aluminum Baffle with Acrylic Overlay

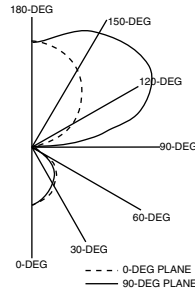
Catalog Number: PLDS02-RD-4-PB-F01-120-T5HO-A0

Report Number: LTL#05754.ies

Luminaire Description: Extruded Aluminum Housing, Formed Semi-Specular Reflector, 18 Cell, 1.25" Deep Specular Aluminum Baffle with Translucent White Acrylic Overlay, Open Top.

Lamps: Two Sylvania FP54/841/HO rated at 4400 lumens each.

Total Luminaire Efficiency = 94.0%
84% Up 16% Down



Specular Aluminum Baffle without Acrylic Overlay

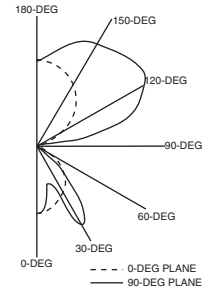
Catalog Number: PLDS02-RD-4-PB-F01-120-T5HO

Report Number: LTL#05757.ies

Luminaire Description: Extruded Aluminum Housing, Formed Semi-Specular Reflector, 18 Cell, 1.25" Deep Specular Aluminum Baffle, Open Top.

Lamps: Two Sylvania FP54/841/HO rated at 4400 lumens each.

Total Luminaire Efficiency = 92.3%
78% Up 22% Down



CANDELA DISTRIBUTION

	0.0	22.5	45.0	67.5	90.0	LUMENS
0	714	714	714	714	714	
5	707	712	713	712	712	68
15	666	673	663	647	643	186
25	607	600	569	563	565	267
35	528	500	481	483	495	309
45	429	394	390	374	359	297
55	329	296	193	99	34	172
65	13	10	7	7	7	15
75	6	7	3	2	4	4
85	0	0	0	0	0	0
90	0	0	0	0	0	0
95	45	295	350	354	351	319
105	234	679	1062	1262	1293	972
115	469	866	1346	1591	1673	1203
125	698	1032	1430	1732	1842	1223
135	904	1163	1491	1725	1811	1108
145	1079	1258	1513	1686	1751	921
155	1214	1321	1486	1604	1649	676
165	1306	1350	1432	1488	1511	403
175	1354	1352	1370	1372	1375	131
180	1353	1353	1353	1353	1353	

CANDELA DISTRIBUTION

	0.0	22.5	45.0	67.5	90.0	LUMENS
0	903	903	903	903	903	
5	900	905	901	889	879	84
15	852	825	680	548	527	195
25	773	622	507	642	806	312
35	669	437	931	1106	1093	519
45	534	553	769	525	465	452
55	353	453	207	84	33	201
65	14	12	9	7	8	16
75	4	5	2	1	3	3
85	0	0	0	0	0	0
90	0	0	0	0	0	0
95	34	263	343	345	342	294
105	186	635	982	1155	1181	885
115	378	785	1263	1496	1573	1115
125	571	943	1326	1630	1738	1130
135	746	1060	1368	1586	1679	1011
145	896	1123	1396	1557	1613	836
155	1016	1157	1348	1478	1523	608
165	1097	1161	1260	1326	1352	353
175	1140	1141	1163	1171	1174	112
180	1133	1133	1133	1133	1133	

COEFFICIENTS OF UTILIZATION - ZONAL CAVITY METHOD

Effective Floor Cavity Reflectance 0.20

RC	80			70			50			30			10			0		
RW	70	50	30	10	70	50	30	10	50	30	10	50	30	10	50	30	10	0
0	93	93	93	93	82	82	82	82	61	61	61	41	41	41	23	23	23	15
1	85	82	78	75	75	72	69	67	54	52	50	37	36	35	21	21	21	14
2	78	72	67	62	68	63	59	56	48	45	43	33	31	30	19	19	18	12
3	71	64	57	52	63	56	51	47	42	39	36	30	28	26	18	17	16	11
4	65	56	50	45	57	50	44	40	38	34	31	27	24	23	16	15	14	10
5	60	50	43	38	53	45	39	34	34	30	27	24	21	20	15	13	13	9
6	55	45	38	33	48	40	34	30	30	26	23	22	19	17	13	12	11	8
7	51	40	33	29	45	36	30	26	27	23	20	19	17	15	12	11	10	7
8	47	36	30	25	41	32	27	23	25	21	18	18	15	13	11	10	9	6
9	43	33	26	22	38	29	24	20	22	18	16	16	13	12	10	9	8	5
10	40	30	24	19	35	27	21	17	20	17	14	15	12	10	9	8	7	5

COEFFICIENTS OF UTILIZATION - ZONAL CAVITY METHOD

Effective Floor Cavity Reflectance 0.20

RC	80			70			50			30			10			0		
RW	70	50	30	10	70	50	30	10	50	30	10	50	30	10	50	30	10	0
0	93	93	93	93	82	82	82	82	63	63	63	45	45	45	28	28	28	20
1	85	82	78	75	75	73	70	68	56	54	52	40	39	38	26	25	25	18
2	78	72	67	63	69	64	60	57	50	47	45	36	34	33	24	23	22	17
3	72	64	58	53	63	57	52	48	44	41	38	32	30	29	21	20	20	15
4	66	57	50	45	58	51	45	41	40	36	33	29	27	25	19	18	17	13
5	60	51	44	39	53	45	40	35	35	31	28	26	24	22	18	16	15	12
6	55	45	38	33	49	41	35	31	32	28	25	24	21	19	16	15	13	10
7	51	41	34	29	45	36	31	27	29	25	22	21	19	17	14	13	12	9
8	47	36	30	25	42	33	27	23	26	22	19	19	16	14	13	11	10	8
9	43	33	26	22	39	30	24	20	23	19	16	17	15	13	12	10	9	7
10	40	30	24	19	36	27	21	18	21	17	14	16	13	11	11	9	8	6

QUICK SELECTION TABLE

Number of 4' luminaires required for initial illumination of 50 footcandles

Luminaire suspension length = 18" Working Plane Height = 30" Floor Reflectance = .20

Room HT	8				9				10				12					
Ceil RF	80		70		80		70		80		70		80		70			
Wall RF	70	50	50	30	70	50	50	30	70	50	50	30	70	50	50	30		
Width Length																		
10. 10.	1	2	2	2	1	2	2	2	2	2	2	2	2	2	2	3		
10. 15.	2	2	2	2	2	2	2	2	2	2	3	2	2	3	3	3		
15. 20.	3	3	3	4	3	3	4	4	3	3	4	4	3	4	4	5		
15. 30.	4	4	5	5	4	4	5	5	4	5	6	4	5	6	6			
20. 20.	3	4	4	4	4	4	4	5	4	4	5	4	4	5	5	6		
20. 30.	5	5	6	6	5	5	6	6	5	6	7	5	6	7	7			
20. 40.	6	6	7	8	6	7	8	8	6	7	8	7	8	9	9			
20. 60.	9	9	10	11	9	10	11	11	9	10	11	10	11	12	13			
30. 30.	7	7	8	8	7	7	8	9	7	8	9	7	8	9	10			
30. 40.	9	9	10	11	9	9	11	11	9	10	11	10	11	12	13			
30. 50.	11	11	12	13	11	11	13	13	11	12	13	14	13	14	15			
30. 60.	12	13	15	15	13	13	15	16	13	14	16	16	14	15	17	18		
60. 60.	24	24	28	28	24	25	28	29	24	26	29	30	25	27	30	31		
60. 80.	31	32	36	37	32	33	37	38	32	33	38	39	33	35	39	41		
60. 100.	39	40	45	46	39	40	46	47	40	41	47	48	41	43	48	50		
100. 100.	64	65	74	75	64	66	74	76	65	66	75	77	66	68	77	80		

QUICK SELECTION TABLE

Number of 4' luminaires required for initial illumination of 50 footcandles

Luminaire suspension length = 18" Working Plane Height = 30" Floor Reflectance = .20

Room HT	8				9				10				12					
Ceil RF	80		70		80		70		80		70		80		70			
Wall RF	70	50	50	30	70	50	50	30	70	50	50	30	70	50	50	30		
Width Length																		
10. 10.	1	2	2	2	1	2	2	2	2	2	2	2	2	2	3			
10. 15.	2	2	2	2	2	2	2	2	2	2	3	2	2	3	3	3		
15. 20.	3	3	3	4	3	3	4	4	3	3	4	4	3	4	4	5		
15. 30.	4	4	4	5	4	4	5	5	4	5	6	4	5	6	6			
20. 20.	3	4	4	4	4	4	4	5	4	4	5	4	4	5	5	6		
20. 30.	5	5	6	6	5	5	6	6	5	6	7	5	6	7	7			
20. 40.	6	6	7	8	6	7	8	8	6	7	8	7	8	9	9			
20. 60.	9	9	10	11	9	10	11	11	9	10	11	10	11	12	13			
30. 30.	7	7	8	8	7	7	8	9	7	8	9	7	8	9	10			
30. 40.	9	9	10	11	9	9	11	11	9	10	11	11	10	11	12			
30. 50.	11	11	12	13	11	11	13	13	11	12	13	14	12	13	14			
30. 60.	13	13	15	15	13	13	15	16	13	14	16	16	14	15	16	18		