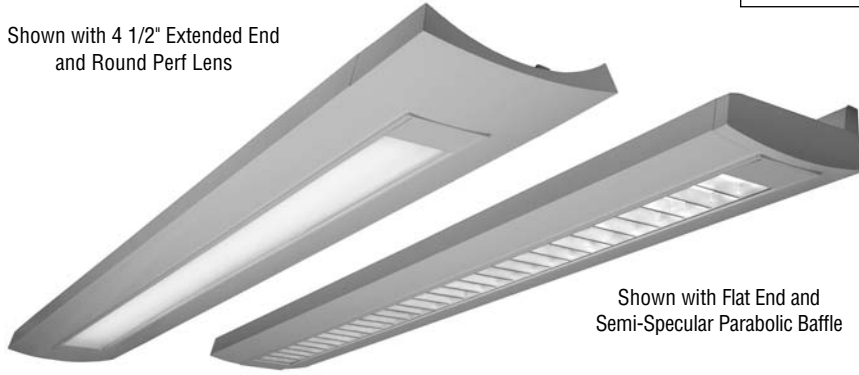


Delgada Series™

Catalog Number	Type
Project Name	

Shown with 4 1/2" Extended End and Round Perf Lens



Shown with Flat End and Semi-Specular Parabolic Baffle

DCP01

8 1/8" x 2" Indirect/Direct (T8 Lamps)

S P E C I F I C A T I O N S

Housing

Two-piece .080" thick extruded aluminum. Standard lengths are 4' and 8'. Provisions may be made for continuous rows of any length.

End Caps

- (FE) Flat End – .100" thick die-cast aluminum finished to match fixture housing and secured with no visible fasteners
- (XE) 4 1/2" Extended End – .100" thick die-cast aluminum finished to match fixture housing and secured with no visible fasteners

Finish

Standard and premium finishes are baked powder coat electrostatically applied (2.0 mil minimum thickness) to assure aesthetics and durability.

Indirect Optical Controls

- (OP) Open Top
- (DC) Clear Extruded 100% Acrylic Dust Cover

Direct Optical Controls

- (PB) 3/4" deep semi-specular aluminum parabolic baffle with blades on 1 1/2" centers
- (PBW) 3/4" deep white aluminum parabolic baffle with blades on 1 1/2" centers
- (RDPL) .118" thick acrylic optical panel with .080" round openings on .110 centers (50% open area)

- (SQPL) .118" thick acrylic optical panel with .080" square openings on .110 centers (50% open area)
- (MPL) .115" thick acrylic compression molded micro-prismatic lens

Reflectors

Die-formed from .020" thick high reflectance specular aluminum.

Ballast

Standard ballasts for T8 lamps are UL/CUL listed, Class P, HPF electronic, universal 120/277volt, instant start with <10% THD.

Circuitry

All fixtures are factory pre-wired for a single circuit. Provision for multiple switching/circuiting is optional.

Wiring

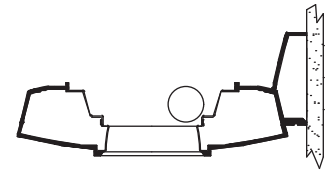
All fixtures intended for continuous rows are provided with factory installed quick-connect wiring.

Controls

Contact factory for control by Occupancy Sensors, Photo Controls and Daylight Harvesting.

Certification

All fixtures are UL/CUL listed for use in "Dry Applications". "Damp Location" is optional.



Standard Lengths:

4' and 8'

Mounting

W = Wall

Series
DCP01

DCP01-XE-8-W-OP/MPL-FO1M-V-T8-[]

End Caps	Indirect Optical Controls	Direct Optical Controls	Standard Finish	Voltage	Lamp Type	Options
FE Flat End	OP Open Top	PB Semi-Specular Parabolic Baffle	F01M Matte White	120	T8	NLCKT Separate Night Light Circuit
XE 4 1/2" Extended End	DC Dust Cover	PBW White Parabolic Baffle	Premium Finishes F01G Gloss White F02 Ivory F03 Stonewash F04 Camel F05 Gray Day F06 Pebble Beach F07 Steel F08 Gray Seal F09 Mocha F10 Bronzed F11 Black F12 Ultrasonic Clear	F13 Merlot F14 Red Skies F15 Lemon F16 Forest Hunter F17 Olive F18 Khaki F19 Heather Green F20 Blue Print F21 Reflex Blue F22 Navy FCC Custom Color		FS Fused Ballasts EMCKT Separate Emergency Circuit EBPL Emergency Battery Pack (635-700 Lumens) EBPH Emergency Battery Pack (975-1325 Lumens) Dim Dimming
		RDPL Round Perf Lens				GTD Generator Transfer Device AO Translucent White Acrylic Overlay above Baffle DS Integral Mount Daylight Sensor



DCP01

Indirect/Direct - T8 Lamps

DCP01-OP/PB-T8

Open Up / Semi-Specular Baffle Down

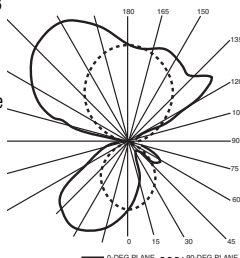
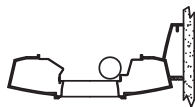
Catalog Number: DCP01-X-4-X-OP/PB-F01M-120-T8

Report Number: LTL#10344.ies

Luminaire Description: Extruded Aluminum Housing with Specular Aluminum Reflector and Semi-Specular Aluminum Baffle Open Top

Lamp: One Philips F32T8/841/ALTO
Rated at 2850 Lumens

Total Luminaire Efficiency = 76.6%
70% Up 30% Down



DCP01-OP/SQPL-T8

Open Up / Frosted Patterned Acrylic Lens Down

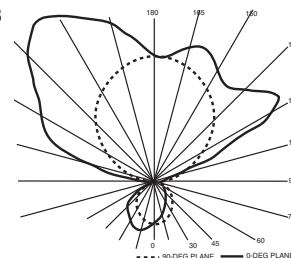
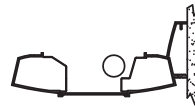
Catalog Number: DCP01-X-4-X-OP/SQPL-F01M-120-T8

Report Number: LTL#10598.ies

Luminaire Description: Extruded Aluminum Housing with Specular Aluminum Reflector and Frosted Patterned Acrylic Enclosure Open Top

Lamp: One Philips F32T8/841/ALTO
Rated at 2850 Lumens

Total Luminaire Efficiency = 80.8%
84% Up 16% Down



DCP01-OP/MPL-T8

Open Up / Micro-Prismatic Lens Down

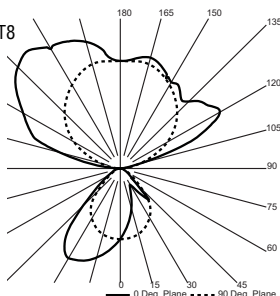
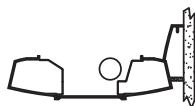
Catalog Number: DCP01-X-4-X-OP/MPL-F01M-120-T8

Report Number: LTL#22467.ies

Luminaire Description: Extruded Aluminum Housing with Specular Aluminum Reflector and Micro-Prismatic Acrylic Lens Open Top

Lamp: One Philips F32T8/841/ALTO
Rated at 2850 Lumens

Total Luminaire Efficiency = 86.0%
76% Up 24% Down



Visit www.pal-lighting.com for complete photometric reports.

