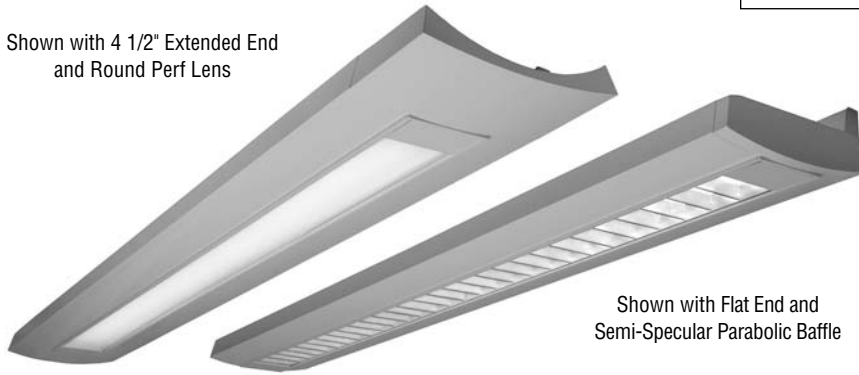


Delgada Series™

Catalog Number	Type
Project Name	

Shown with 4 1/2" Extended End and Round Perf Lens



Shown with Flat End and Semi-Specular Parabolic Baffle

DCP02

8 1/8" x 2" Indirect/Direct
(T8 Lamps)

S P E C I F I C A T I O N S

Housing

Two-piece .080" thick extruded aluminum. Standard lengths are 4' and 8'. Provisions may be made for continuous rows of any length.

End Caps

- (FE) Flat End – .100" thick die-cast aluminum finished to match fixture housing and secured with no visible fasteners
- (XE) 4 1/2" Extended End – .100" thick die-cast aluminum finished to match fixture housing and secured with no visible fasteners

Finish

Standard and premium finishes are baked powder coat electrostatically applied (2.0 mil minimum thickness) to assure aesthetics and durability.

Direct Optical Controls

- (PB) 3/4" deep semi-specular aluminum parabolic baffle with blades on 1 1/2" centers
- (PBW) 3/4" deep white aluminum parabolic baffle with blades on 1 1/2" centers
- (RDPL) .118" thick acrylic optical panel with .080" round openings on .110 centers (50% open area)
- (SQPL) .118" thick acrylic optical panel with .080" square openings on .110 centers (50% open area)

Reflectors

Die-formed from .020" thick high reflectance specular aluminum.

Ballast

Standard ballasts for T8 lamps are UL/CUL listed, Class P, HPF electronic, universal 120/277volt, instant start with <10% THD.

Circuitry

All fixtures are factory pre-wired for a single circuit. Provision for multiple switching/circuiting is optional.

Wiring

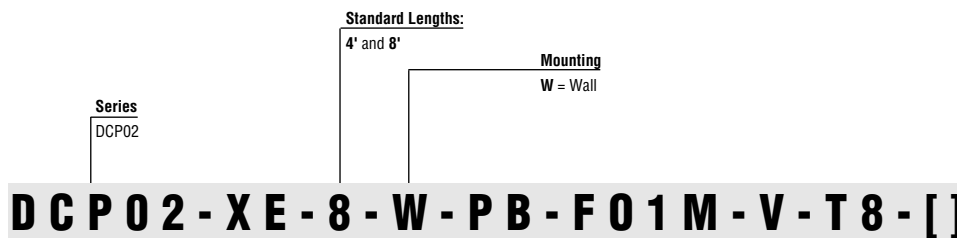
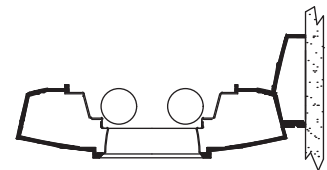
All fixtures intended for continuous rows are provided with factory installed quick-connect wiring.

Controls

Contact factory for control by Occupancy Sensors, Photo Controls and Daylight Harvesting.

Certification

All fixtures are UL/CUL listed for use in "Dry Applications". "Damp Location" is optional.



End Caps	Direct Optical Controls	Standard Finishes	Voltage	Lamp Type	Options
FE Flat End	PB Semi-Specular Parabolic Baffle	F01M Matte White F01G Gloss White Premium Finishes	120	T8	SS-L/R (Left/Right) Lamp Row Switching (Common Neutral Utilized)
XE 4 1/2" Extended End	PBW White Parabolic Baffle	F02 Ivory F03 Stonewash F04 Camel F05 Gray Day F06 Pebble Beach F07 Steel F08 Gray Seal F09 Mocha F10 Bronzed F11 Black F12 Ultrasonic Clear	277 *347 *Contact Factory		Dim Dimming FS Fused Ballasts GTD Generator Transfer Device DC Clear Extruded 100% DR Acrylic Dust Cover AO Translucent White Acrylic Overlay above Baffle
	RDPL Round Perf Lens SQPL Square Perf Lens	F13 Merlot F14 Red Skies F15 Lemon F16 Forest Hunter F17 Olive F18 Khaki F19 Heather Green F20 Blue Print F21 Reflex Blue F22 Navy FCC Custom Color			NLCKT Separate Night Light Circuit EMCKT Separate Emergency Circuit EBPL Emergency Battery Pack (635-700 Lumens) EBPH Emergency Battery Pack (975-1325 Lumens)

To view Wood Grain, Marble and Granite Finishes on our Website see "Products"-"Specialty Finishes".



DCP02

Indirect/Direct - T8 Lamps

Semi-Specular Baffle

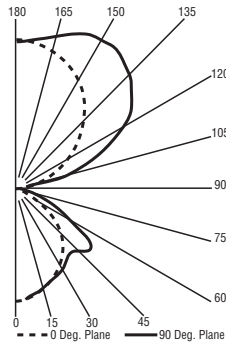
Catalog Number: DCP02-FE-4-W-PB-F01M-120-T8

Report Number: LTL#10335.ies

Luminaire Description: Extruded Aluminum Housing with Specular Aluminum Reflector and Semi-Specular Aluminum Baffle Open Top

Lamps: Two Philips F32T8/TL830/ALTO Rated at 2850 Lumens Each

Total Luminaire Efficiency = 79.8%
67% Up 33% Down



CANDELA DISTRIBUTION

	LUMENS				
	0.0	22.5	45.0	67.5	90.0
0	593	593	593	593	593
5	589	588	591	587	588
15	554	551	553	554	556
25	499	492	495	504	514
35	428	419	433	456	475
45	338	335	370	417	473
55	233	252	335	417	464
65	39	62	153	218	266
75	6	8	10	20	29
85	0	0	0	2	2
90	0	1	1	1	2
95	33	60	58	55	53
105	140	270	286	263	258
115	267	420	520	546	546
125	395	542	656	718	739
135	511	630	752	820	841
145	609	684	810	870	886
155	688	723	810	875	894
165	744	754	787	821	832
175	775	773	779	780	779
180	775	775	775	775	775

COEFFICIENTS OF UTILIZATION - ZONAL CAVITY METHOD

Effective Floor Cavity Reflectance 0.20

RC	80				70				50				30				10				0
	RW	70	50	30	10	70	50	30	10	50	30	10	50	30	10	50	30	10	0		
0	82	82	82	82	74	74	74	74	59	59	59	45	45	45	32	32	32	26			
1	75	72	69	67	68	65	63	61	52	51	49	40	39	38	29	29	28	23			
2	69	64	59	55	62	58	54	51	46	44	42	36	34	33	26	25	24	20			
3	63	56	51	47	57	51	46	43	41	38	35	32	30	28	24	22	21	17			
4	58	50	44	39	52	45	40	36	37	33	30	29	26	24	21	20	18	15			
5	53	44	38	33	48	40	35	31	32	29	26	25	23	21	19	17	16	13			
6	49	39	33	29	44	36	30	27	29	25	22	23	20	18	17	15	14	11			
7	45	35	29	25	40	32	27	23	26	22	19	20	18	16	15	13	12	10			
8	41	32	26	22	37	29	24	20	23	19	17	18	16	13	14	12	10	8			
9	38	28	23	19	34	26	21	17	21	17	14	17	14	12	12	10	9	7			
10	35	26	20	17	32	24	19	15	19	15	13	15	12	10	11	9	8	6			

Acrylic Optical Panel

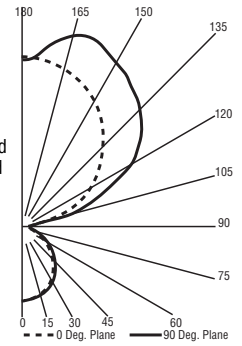
Catalog Number: DCP02-FE-4-W-SQPL-F01M-120-T8

Report Number: LTL#10339.ies

Luminaire Description: Extruded Aluminum Housing with Specular Aluminum Reflector and Semi-Specular with Frosted Patterned Acrylic Enclosure

Lamps: Two Philips F32T8/TL830/ALTO Rated at 2850 Lumens Each

Total Luminaire Efficiency = 79.8%
78% Up 22% Down



CANDELA DISTRIBUTION

	LUMENS				
	0.0	22.5	45.0	67.5	90.0
0	398	398	398	398	398
5	396	395	396	394	394
15	378	377	380	379	379
25	342	342	346	347	348
35	291	292	298	300	302
45	231	233	238	241	242
55	169	170	174	175	176
65	111	111	113	112	112
75	56	55	55	54	53
85	14	13	12	10	10
90	1	1	1	2	2
95	37	59	56	52	50
105	176	289	282	265	262
115	337	474	555	565	557
125	493	646	717	779	795
135	631	805	858	904	917
145	745	898	972	1003	1011
155	836	933	1057	1083	1086
165	901	942	1018	1072	1087
175	936	932	947	955	957
180	931	931	931	931	931

COEFFICIENTS OF UTILIZATION - ZONAL CAVITY METHOD

Effective Floor Cavity Reflectance 0.20

RC	80				70				50				30				10				0
	RW	70	50	30	10	70	50	30	10	50	30	10	50	30	10	50	30	10	0		
0	80	80	80	80	71	71	71	71	54	54	54	39	39	39	24	24	24	18			
1	73	70	67	64	65	62	60	58	48	46	45	34	33	32	22	21	21	15			
2	67	61	57	53	59	55	51	48	42	39	37	30	29	27	19	19	18	13			
3	61	54	49	44	54	48	44	40	37	34	31	27	25	23	17	16	15	11			
4	56	48	42	37	49	43	38	34	33	29	27	24	22	20	16	14	13	10			
5	51	42	36	32	45	38	33	29	29	26	23	21	19	17	14	13	11	8			
6	47	38	32	27	41	34	29	25	26	23	20	19	17	15	13	11	10	7			
7	43	34	28	24	38	30	25	21	24	20	17	17	15	13	11	10	9	6			
8	40	30	25	21	35	27	22	19	21	18	15	16	13	11	10	9	8	6			
9	37	28	22	18	33	25	20	16	19	16	13	14	12	10	9	8	7	5			
10	34	25	20	16	30	22	18	14	18	14	12	13	10	9	8	7	6	4			

