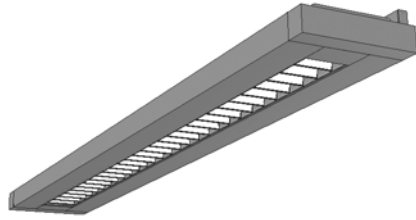


Delgada

Catalog Number	Type
Project Name	



DRP02

7¹³/₁₆" x 2" Indirect/Direct
(T8 Lamps)

S P E C I F I C A T I O N S

Housing

Two-piece .080" thick extruded aluminum. Standard lengths are 4', 8' and 12'. Provisions may be made for continuous rows of any length.

End Caps

- (FE) Flat End
.100" thick die-cast aluminum finished to match fixture housing and secured with no visible fasteners.

Direct Optical Controls

- (PB) 3/4" deep semi-specular aluminum parabolic baffle with blades on 1 1/2" centers
- (PBW) 3/4" deep parabolic white baffle with blades on 1 1/2" centers
- (RDPL) .118" thick acrylic optical panel with .080" round openings on .110 centers (50% open area)
- (SQPL) .118" thick acrylic optical panel with .080" square openings on .110 centers (50% open area)

Reflectors

Die-formed from .022" thick high reflectance specular aluminum.

Ballast

Standard ballasts for T8 lamps are UL/CUL Listed, Class P, HPF, Electronic, Universal 120/277volt, Program Instant Start with <10% THD.

Circuitry

All fixtures are factory pre-wired for a single circuit. Provision for multiple switching/circuiting is optional.

Wiring

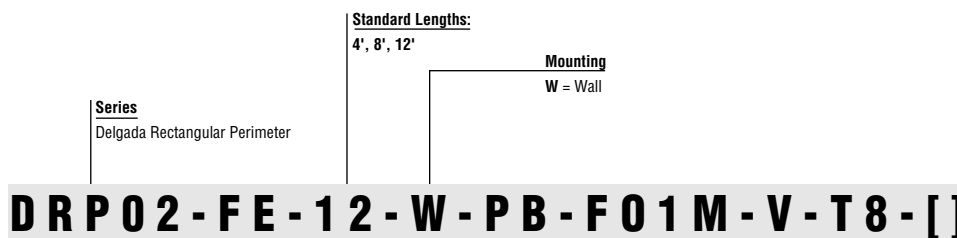
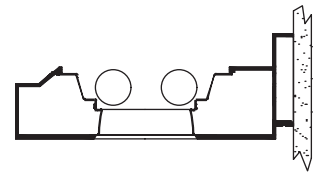
All fixtures intended for continuous rows are provided with factory installed 12 ga. quick-connect wiring harness.

Finish

Standard and premium finishes are baked powder coat electrostatically applied (2.0 mil minimum thickness) to assure aesthetics and durability.

Certification

All fixtures are UL/CUL listed for use in "Dry Applications". "Damp Location" is optional.



End Caps

FE
Flat End

Direct Optical Control

PB
Parabolic Baffle

PBW
Parabolic White Baffle

RDPL
Round Perf Lens

SQPL
Square Perf Lens

Standard Finish

F01M Matte White
F01G Gloss White

Premium Finishes

F02 Ivory
F03 Stonewash
F04 Camel
F05 Gray Day
F06 Pebble Beach
F07 Steel
F08 Gray Seal
F09 Mocha
F10 Bronzed
F11 Black
F12 Ultrasonic Clear

F13 Merlot
F14 Red Skies
F15 Lemon
F16 Forest Hunter
F17 Olive
F18 Khaki
F19 Heather Green
F20 Blue Print
F21 Reflex Blue
F22 Navy
FCC Custom Color

Voltage

120
277
347*

*Contact
Factory

Lamp Type

T8

Options

EM
Emergency Battery Pack

2Ckt
Two Circuit Wiring

SS
Separate Switching
(Common Neutral Utilized)

Dim
Dimming

FS
Fused Ballast

To view Wood Grain, Marble and Granite Finishes
on our Website see "Products"- "Specialty Finishes".



DRP02

Indirect/Direct - T8 Lamps

Semi-Specular Baffle

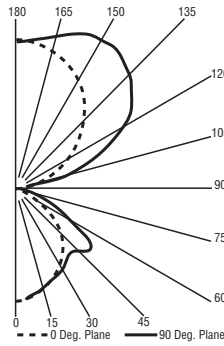
Catalog Number: DRP02-FE-4-W-PB-F01M-120-T8

Report Number: LTL#10335.ies

Luminaire Description: Extruded Aluminum Housing with Specular Aluminum Reflector and Semi-Specular Aluminum Baffle Open Top

Lamps: Two Philips F32T8/TL830/ALTO Rated at 2850 Lumens Each

Total Luminaire Efficiency = 79.8%
67% Up 33% Down



CANDELA DISTRIBUTION

	LUMENS				
	0.0	22.5	45.0	67.5	90.0
0	593	593	593	593	593
5	589	588	591	587	588
15	554	551	553	554	556
25	499	492	495	504	514
35	428	419	433	456	475
45	338	335	370	417	473
55	233	252	335	417	464
65	39	62	153	218	266
75	6	8	10	20	29
85	0	0	0	2	2
90	0	1	1	1	2
95	33	60	58	55	53
105	140	270	286	263	258
115	267	420	520	546	546
125	395	542	656	718	739
135	511	630	752	820	841
145	609	684	810	870	886
155	688	723	810	875	894
165	744	754	787	821	832
175	775	773	779	780	779
180	775	775	775	775	775

COEFFICIENTS OF UTILIZATION - ZONAL CAVITY METHOD

Effective Floor Cavity Reflectance 0.20

RC	80				70				50				30				10				0
	70	50	30	10	70	50	30	10	50	30	10	50	30	10	50	30	10	50	30	10	0
0	82	82	82	82	74	74	74	74	59	59	59	45	45	45	32	32	32	26	26	26	26
1	75	72	69	67	68	65	63	61	52	51	49	40	39	38	29	29	28	23	23	23	23
2	69	64	59	55	62	58	54	51	46	44	42	36	34	33	26	25	24	20	20	20	20
3	63	56	51	47	57	51	46	43	41	38	35	32	30	28	24	22	21	17	17	17	17
4	58	50	44	39	52	45	40	36	37	33	30	29	26	24	21	20	18	15	15	15	15
5	53	44	38	33	48	40	35	31	32	29	26	25	23	21	19	17	16	13	13	13	13
6	49	39	33	29	44	36	30	27	29	25	22	23	20	18	17	15	14	11	11	11	11
7	45	35	29	25	40	32	27	23	26	22	19	20	18	16	15	13	12	10	10	10	10
8	41	32	26	22	37	29	24	20	23	19	17	18	16	13	14	12	10	8	8	8	8
9	38	28	23	19	34	26	21	17	21	17	14	17	14	12	12	10	9	7	7	7	7
10	35	26	20	17	32	24	19	15	19	15	13	15	12	10	11	9	8	6	6	6	6

Acrylic Optical Panel

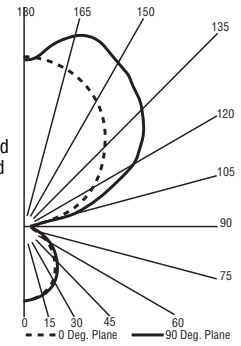
Catalog Number: DRP02-FE-4-W-SQPL-F01M-120-T8

Report Number: LTL#10339.ies

Luminaire Description: Extruded Aluminum Housing with Specular Aluminum Reflector and Semi-Specular with Frosted Patterned Acrylic Enclosure

Lamps: Two Philips F32T8/TL830/ALTO Rated at 2860 Lumens Each

Total Luminaire Efficiency = 79.8%
78% Up 22% Down



CANDELA DISTRIBUTION

	LUMENS				
	0.0	22.5	45.0	67.5	90.0
0	398	398	398	398	398
5	396	395	396	394	394
15	378	377	380	379	379
25	342	342	346	347	348
35	291	292	298	300	302
45	231	233	238	241	242
55	169	170	174	175	176
65	111	111	113	112	112
75	56	55	55	54	53
85	14	13	12	10	10
90	1	1	1	2	2
95	37	59	56	52	50
105	176	289	282	265	262
115	337	474	555	565	557
125	493	646	717	779	795
135	631	805	858	904	917
145	745	898	972	1003	1011
155	836	933	1057	1083	1086
165	901	942	1018	1072	1087
175	936	932	947	955	957
180	931	931	931	931	931

COEFFICIENTS OF UTILIZATION - ZONAL CAVITY METHOD

Effective Floor Cavity Reflectance 0.20

RC	80				70				50				30				10				0
	70	50	30	10	70	50	30	10	50	30	10	50	30	10	50	30	10	50	30	10	0
0	80	80	80	80	71	71	71	71	54	54	54	39	39	39	24	24	24	18	18	18	18
1	73	70	67	64	65	62	60	58	48	46	45	34	33	32	22	21	21	15	15	15	15
2	67	61	57	53	59	55	51	48	42	39	37	30	29	27	19	19	18	13	13	13	13
3	61	54	49	44	54	48	44	40	37	34	31	27	25	23	17	16	15	11	11	11	11
4	56	48	42	37	49	43	38	34	33	29	27	24	22	20	16	14	13	10	10	10	10
5	51	42	36	32	45	38	33	29	29	26	23	21	19	17	14	13	11	8	8	8	8
6	47	38	32	27	41	34	29	25	26	23	20	19	17	15	13	11	10	7	7	7	7
7	43	34	28	24	38	30	25	21	24	20	17	17	15	13	11	10	9	6	6	6	6
8	40	30	25	21	35	27	22	19	21	18	15	16	13	11	10	9	8	5	5	5	5
9	37	28	22	18	33	25	20	16	19	16	13	14	12	10	9	8	7	5	5	5	5
10	34	25	20	16	30	22	18	14	18	14	12	13	10	9	8	7	6	4	4	4	4

