

# Delgada(Indirect) Series™

Catalog Number	Type
Project Name	



Shown with Flat End and Slotted Housing

Shown with 4 1/2" Extended End and Solid Housing

## DRPI01

8<sup>5</sup>/<sub>16</sub>" x 2" Indirect  
(T8, T5 or T5HO Lamps)

### S P E C I F I C A T I O N S

#### Housing

- (SL) Slotted Housing - One-piece .080" thick extruded aluminum with 1/4" wide by 2 1/2" long slots on 3" centers backed with a translucent white acrylic diffuser
- (SH) Solid Housing - One-piece .080" thick extruded aluminum

#### End Caps

- (FE) Flat End - .100" thick die-cast aluminum finished to match fixture housing and secured with no visible fasteners
- (XE) 4 1/2" Extended End - .100" thick die-cast aluminum finished to match fixture housing and secured with no visible fasteners

#### Finish

Standard and premium finishes are baked powder coat electrostatically applied (2.0 mil minimum thickness) to assure aesthetics and durability.

#### Reflectors

Die-formed from .020" thick high reflectance specular aluminum.

#### Ballast

Standard ballasts for T5 and T5HO lamps are UL/CUL listed, Class P, HPF electronic, universal 120/277volt, programmed rapid start with <10% THD.

Standard ballasts for T8 lamps are UL/CUL listed, Class P, HPF electronic, universal 120/277volt, instant start with <10% THD.

#### Circuitry

All fixtures are factory pre-wired for a single circuit. Provision for multiple switching/circuiting is optional.

#### Wiring

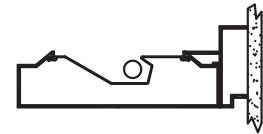
All fixtures intended for continuous rows are provided with factory installed quick-connect wiring.

#### Controls

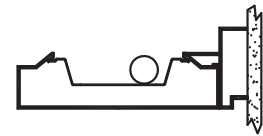
Contact factory for daylight and/or occupancy sensor controls.

#### Certification

All fixtures are UL/CUL listed for use in "Dry Applications". "Damp Location" is optional.



DRPI01  
T5 Or T5HO



DRPI01  
T8

**Standard Lengths:**  
4' and 8'  
For Continuous Rows see Note

**Mounting**  
W = Wall

**Series**  
DRPI01

## DRPI01-SL-XE-8-W-F01M-V-T5HO-[ ]

Housing Style	End Caps	Standard Finish	Voltage	Lamp Type	Options
<b>SH</b> Solid	<b>FE</b> Flat End	<b>F01M</b> Matte White <b>Premium Finishes</b>	120	T5	<b>NLCKT</b> Separate Night Light Circuit <b>FS</b> Fused Ballasts
<b>SL</b> Slotted	<b>XE</b> 4 1/2" Extended End	<b>F01G</b> Gloss White <b>F02</b> Ivory <b>F03</b> Stonewash <b>F04</b> Camel <b>F05</b> Gray Day <b>F06</b> Pebble Beach <b>F07</b> Steel <b>F08</b> Gray Seal <b>F09</b> Mocha <b>F10</b> Bronzed <b>F11</b> Black <b>F12</b> Ultrasonic Clear	277 347	T5HO T8	<b>EMCKT</b> Separate Emergency Circuit <b>EBPL</b> Emergency Battery Pack (635-700 Lumens) <b>EBPH</b> Emergency Battery Pack (975-1325 Lumens) <b>Dim</b> Dimming
		<b>F13</b> Merlot <b>F14</b> Red Skies <b>F15</b> Lemon <b>F16</b> Forest Hunter <b>F17</b> Olive <b>F18</b> Khaki <b>F19</b> Heather Green <b>F20</b> Blue Print <b>F21</b> Reflex Blue <b>F22</b> Navy <b>FCC</b> Custom Color			<b>GTG</b> Generator Transfer Device <b>DC</b> for T5 or T5HO Lamps Clear Sheet Acrylic Dust Cover <b>DC</b> for T8 Lamps Clear Extruded 100% DR Acrylic Dust Cover <b>DS</b> Integral Mount Daylight Sensor

Note: For continuous rows over 8' specify nominal row length in 1' increments.



# DRPI01

## Indirect - T5HO Lamps

### DRPI01-SH-T5HO

#### Solid Housing

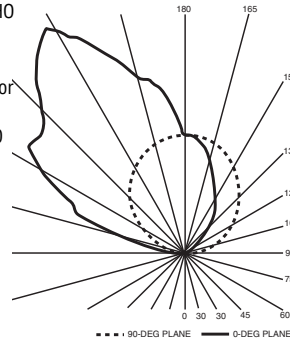
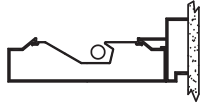
**Catalog Number:** DRPI01-SH-4-W-F01M-120-T5HO

**Report Number:** LTL#13293.ies

**Luminaire Description:** Extruded Aluminum Housing with Specular Aluminum Reflector Open Top

**Lamp:** One Philips F54T5/841/HO/ALTO Rated at 4400 Lumens

Total Luminaire Efficiency = 75.1%  
100% Up 0% Down



### DRPI01-SL-T5HO

#### Slotted Housing

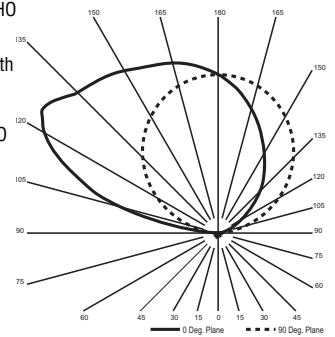
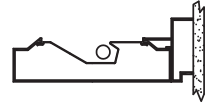
**Catalog Number:** DRPI01-SL-4-W-F01M-120-T5HO

**Report Number:** LTL#19145.ies

**Luminaire Description:** Extruded Aluminum Housing with Specular Aluminum Reflector Open Top

**Lamp:** One Philips F54T5/841/HO/ALTO Rated at 4400 Lumens

Total Luminaire Efficiency = 63.7%  
99% Up 1% Down



Visit [www.pal-lighting.com](http://www.pal-lighting.com) for complete photometric reports.

