

Microlinea Series™

Catalog Number	Type
Project Name	



Shown with Linear Prismatic Lens

Shown with White Parabolic Baffle

MLP-I1/D1

3 1/8" x 5" Indirect/Direct (T8, T5 or T5HO Lamps)

ADA Compliant

S P E C I F I C A T I O N S

Housing

One-piece .080" thick extruded aluminum. Die-cast aluminum end caps are secured with no visible fasteners. Standard lengths are 4', 8' and 12'. Provisions may be made for continuous rows of any length.

Finish

Standard and premium finishes are baked powder coat electrostatically applied (2.0 mil minimum thickness) to assure aesthetics and durability.

Indirect Optical Controls

- (OP) Open
- (DC) Clear extruded 100% DR acrylic dust cover

Direct Optical Controls

- (PB) 3/4" deep semi-specular aluminum parabolic baffle with blades on 1 1/2" centers
- (PBW) 3/4" deep white aluminum parabolic baffle with blades on 1 1/2" centers
- (LP) Clear extruded 100% DR acrylic linear prismatic lens
- (DLP) Directional clear extruded 100% DR acrylic linear prismatic wall wash lens
- (TWA) Translucent white extruded 100% DR acrylic lens
- (FC) Frosted clear extruded DR acrylic lens

Reflectors

- Indirect - Die-formed from .020" thick high reflectance specular aluminum.
- Direct - For PB, PBW, LP and TWA Optical Controls - Die-formed from .020" thick aluminum and finished with a high reflectance white enamel.
- Direct - For DLP Optical Control - Die-formed from .020" thick high reflectance specular aluminum.

Ballast

- Standard ballasts for T5 and T5HO lamps are UL/CUL listed, Class P, HPF, electronic, universal 120/277volt, programmed rapid start with <10% THD.
- Standard ballasts for T8 lamps are UL/CUL listed, Class P, HPF, electronic, universal 120/277volt, instant start with <10% THD.

Circuitry

All fixtures are factory pre-wired for a single circuit. Provision for multiple switching/circuiting is optional.

Wiring

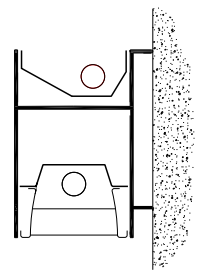
All fixtures intended for continuous rows are provided with factory installed quick-connect wiring.

Controls

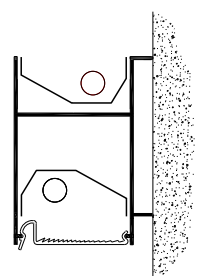
Contact factory for control by Occupancy Sensors, Photo Controls and Daylight Harvesting.

Certification

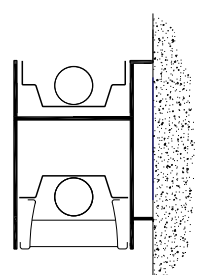
All fixtures are UL/CUL listed for use in 'Dry Applications'. 'Damp Location' is optional.



MLP-I1/D1
T5 or T5HO



MLP-I1/D1-DLP
T5 or T5HO



MLP-I1/D1
T8

Series: MLP-I1/D1

Standard Lengths: 4', 8' and 12'

Mounting: W = Wall

MLP-I1/D1-12-W-DC/PB-F01M-V-T5HO-[]

Indirect Optical Controls	Direct Optical Controls	Standard Finishes	Voltage	Lamp Type	Options
OP Open	PB Semi-Specular Parabolic Baffle	F01M Matte White F01G Gloss White Premium Finishes	120	T5	SS-U/L (Upper/Lower) Lamp Row Switching (Common Neutral Utilized)
DC Clear Dust Cover	PBW White Parabolic Baffle	F02 Ivory F03 Stonewash F04 Camel F05 Gray Day F06 Pebble Beach F07 Steel F08 Gray Seal F09 Mocha F10 Bronzed F11 Black F12 Ultrasonic Clear	277 347	T5HO T8	NLCKT Separate Night Light Circuit EMCKT Separate Emergency Circuit
	LP Linear Prismatic Lens	F13 Merlot F14 Red Skies F15 Lemon F16 Forest Hunter F17 Olive F18 Khaki F19 Heather Green F20 Blue Print F21 Reflex Blue F22 Navy FCC Custom Color			Dim Dimming FS Fused Ballasts GTD Generator Transfer Device AO White Acrylic Baffle Overlay (N/A for T8) (N/A with DLP)
	DLP Directional Linear Prismatic WW Lens (N/A for T8 Lamps)				EBPL Emergency Battery Pack (635-700 Lumens) EBPH Emergency Battery Pack (975-1325 Lumens)
	TWA Translucent White Acrylic Lens				
	FC Frosted Clear Lens				

To view Wood Grain, Marble and Granite Finishes on our Website see "Products"-"Specialty Finishes".



MLP-I1/D1

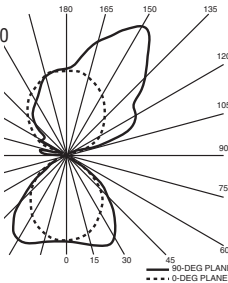
Indirect/Direct - T5HO Lamps Semi-Specular Aluminum Parabolic Baffle

Catalog Number: MLP-I1/D1-4-W-OP/PB-F01M-120-T5HO
Report Number: LTL#13054.ies

Luminaire Description: Extruded Aluminum Housing with Specular Aluminum Reflector Up and White Aluminum Reflector Down and Semi-Specular Parabolic Baffle and Open Top

Lamps: Two Philips F54T5/850/HO/ALTO
Rated at 4400 Lumens Each

Total Luminaire Efficiency = 66.0%
61% Up 39% Down



CANDELA DISTRIBUTION		LUMENS									
	0.0	22.5	45.0	67.5	90.0	112.5	135.0	157.5	180.0		
0	960	960	960	960	960	960	960	960	960	960	
5	973	967	968	959	956	953	960	957	960	92	
15	1038	1017	976	927	906	913	950	981	997	273	
25	1089	1055	979	873	822	850	948	1034	1071	441	
35	961	939	904	796	708	771	904	979	1010	545	
45	581	613	673	660	561	655	722	712	714	502	
55	196	227	311	408	365	426	381	302	283	298	
65	47	60	70	89	94	98	93	75	64	87	
75	14	14	14	20	23	21	17	19	19	20	
85	2	2	2	2	2	2	3	4	4	3	
90	0	0	0	0	0	0	0	0	0	0	
95	29	30	48	97	31	62	114	101	125	83	
105	437	490	486	342	153	100	56	192	231	288	
115	858	816	656	686	314	275	224	171	141	450	
125	920	925	993	973	478	409	389	269	297	568	
135	1269	1276	1373	1041	625	589	546	529	527	661	
145	1644	1633	1433	1071	749	732	649	648	662	630	
155	1594	1503	1318	1039	848	852	852	766	763	482	
165	1332	1261	1147	997	921	943	924	907	908	292	
175	1035	1013	1002	974	962	959	979	981	983	94	
180	967	967	967	967	967	967	967	967	967	967	

MLP-I1/D1

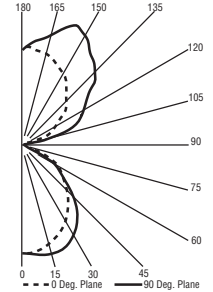
Indirect/Direct - T8 Lamps Semi-Specular Aluminum Parabolic Baffle

Catalog Number: MLP-I1/D1-4-W-OP/PB-F01M-120-T8
Report Number: LTL#13051.ies

Luminaire Description: Extruded Aluminum Housing with Specular Aluminum Reflector Up and White Aluminum Reflector Down and Semi-Specular Parabolic Baffle and Open Top

Lamps: Two Philips F32T8/835/ALTO
Rated at 2850 Lumens Each

Total Luminaire Efficiency = 68.8%
62% Up 38% Down



CANDELA DISTRIBUTION		LUMENS									
	0.0	22.5	45.0	67.5	90.0						
0	653	653	653	653	653						
5	648	648	655	654	657						
15	613	622	646	666	675						
25	556	576	620	648	660						
35	480	513	544	552	568						
45	384	415	417	425	443						
55	256	266	259	260	270						
65	74	74	78	68	56						
75	18	15	13	13	13						
85	2	1	1	1	2						
90	0	0	0	0	0						
95	24	55	51	42	38						
105	112	184	243	245	242						
115	209	327	341	378	397						
125	303	471	489	493	490						
135	388	555	602	615	620						
145	460	571	711	717	712						
155	518	583	691	772	788						
165	558	588	635	670	685						
175	579	577	591	597	598						
180	572	572	572	572	572						

MLP-I1/D1

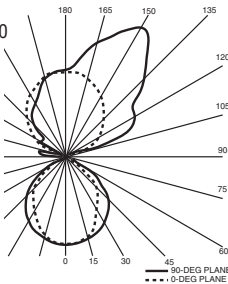
Indirect/Direct - T5HO Lamps Linear Prismatic Acrylic Lens

Catalog Number: MLP-I1/D1-4-W-OP/LP-F01M-120-T5HO
Report Number: LTL#13052.ies

Luminaire Description: Extruded Aluminum Housing with Specular Aluminum Reflector Up and White Aluminum Reflector Down and Linear Prismatic Acrylic Lens and Open Top

Lamps: Two Philips F54T5/850/HO/ALTO
Rated at 4400 Lumens Each

Total Luminaire Efficiency = 64.6%
63% Up 37% Down



CANDELA DISTRIBUTION		LUMENS									
	0.0	22.5	45.0	67.5	90.0	112.5	135.0	157.5	180.0		
0	971	971	971	971	971	971	971	971	971	971	
5	970	969	974	963	971	968	976	971	973	92	
15	938	939	945	940	941	940	942	928	924	265	
25	801	811	850	873	880	866	834	794	780	385	
35	640	645	682	747	782	730	664	640	638	433	
45	484	494	518	566	640	547	516	490	475	408	
55	261	281	330	376	436	362	318	267	247	294	
65	138	0	167	205	208	195	159	137	132	151	
75	82	1	88	90	73	84	84	81	79	78	
85	32	0	34	28	12	21	26	24	24	25	
90	7	7	6	4	0	0	2	4	4	4	
95	29	30	48	97	31	62	114	101	125	83	
105	437	490	486	342	153	100	56	192	231	288	
115	858	816	656	686	314	275	224	171	141	450	
125	920	925	993	973	478	409	389	269	297	568	
135	1269	1276	1373	1041	625	589	546	529	527	661	
145	1644	1633	1433	1071	749	732	649	648	662	630	
155	1594	1503	1318	1039	848	852	852	766	763	482	
165	1332	1261	1147	997	921	943	924	907	908	292	
175	1035	1013	1002	974	962	959	979	981	983	94	
180	967	967	967	967	967	967	967	967	967	967	

MLP-I1/D1

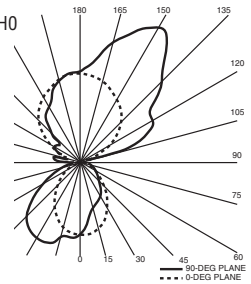
Indirect/Direct - T5HO Lamps Wall Wash Lens

Catalog Number: MLP-I1/D1-4-W-OP/DLP-F01M-120-T5HO
Report Number: LTL#13058.ies

Luminaire Description: Extruded Aluminum Housing with Specular Aluminum Reflector Up and Down and Directional Linear Prismatic Acrylic Lens and Open Top

Lamps: Two Philips F54T5/850/HO/ALTO
Rated at 4400 Lumens Each

Total Luminaire Efficiency = 64.3%
63% Up 37% Down



CANDELA DISTRIBUTION		LUMENS									
	0.0	22.5	45.0	67.5	90.0	112.5	135.0	157.5	180.0		
0	789	789	789	789	789	789	789	789	789	789	
5	700	705	729	756	788	810	826	828	828	73	
15	534	537	576	655	740	803	817	863	871	202	
25	477	474	482	515	643	743	872	930	948	310	
35	404	405	428	403	508	681	842	925	934	380	
45	292	296	326	348	358	605	771	834	835	395	
55	224	215	217	252	227	491	629	635	606	345	
65	162	152	143	143	136	347	419	384	360	245	
75	94	84	76	65	60	170	196	179	164	127	
85	26	22	18	12	10	31	36	34	26	29	
90	11	8	5	2	1	2	2	2	2	1	
95	29	30	48	97	31	62	114	101	125	83	
105	437	490	486	342	153	100	56	192	231	288	
115	858	816	656	686	314	275	224	171	141	450	
125	920	925	993	973	478	409	389	269	297	568	
135	1269	1276	1373	1041	625	589	546	529	527	661	
145	1644	1633	1433	1071	749	732	649	648	662	630	
155	1594	1503	1318	1039	848	852	852	766	763	482	
165	1332	1261	1147	997	921	943	924	907	908	292	
175	1035	1013	1002	974	962	959	979	981	983	94	
180	967	967	967	967	967	967	967	967	967	967	

Note: See Website for additional Photometric Reports.

