

# Microlinea Series™

Catalog Number	Type
Project Name	



Shown with Linear Prismatic Lens

Shown with White Parabolic Baffle

## MLP-I2/D1

3 1/8" x 5" Indirect/Direct (T5 or T5HO Lamps)

ADA Compliant

### S P E C I F I C A T I O N S

#### Housing

One-piece .080" thick extruded aluminum. Die-cast aluminum end caps are secured with no visible fasteners. Standard lengths are 4', 8' and 12'. Provisions may be made for continuous rows of any length.

#### Finish

Standard and premium finishes are baked powder coat electrostatically applied (2.0 mil minimum thickness) to assure aesthetics and durability.

#### Indirect Optical Controls

- (OP) Open
- (DC) Clear extruded 100% DR acrylic dust cover

#### Direct Optical Controls

- (PB) 3/4" deep semi-specular aluminum parabolic baffle with blades on 1 1/2" centers
- (PBW) 3/4" deep white aluminum parabolic baffle with blades on 1 1/2" centers
- (LP) Clear extruded 100% DR acrylic linear prismatic lens
- (DLP) Directional clear extruded 100% DR acrylic linear prismatic wall wash lens
- (TWA) Translucent white extruded 100% DR acrylic lens
- (FC) Frosted clear extruded DR acrylic lens

#### Reflectors

- Indirect - Die-formed from .020" thick high reflectance specular aluminum.
- Direct - For PB, PBW, LP and TWA Optical Controls - Die-formed from .020" thick aluminum and finished with a high reflectance white enamel.
- Direct - For DLP Optical Control - Die-formed from .020" thick high reflectance specular aluminum.

#### Ballast

Standard ballasts for T5 and T5HO lamps are UL/CUL listed, Class P, HPF, electronic, universal 120/277volt, programmed rapid start with <10% THD.

#### Circuitry

All fixtures are factory pre-wired for a single circuit. Provision for multiple switching/circuiting is optional.

#### Wiring

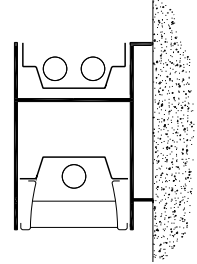
All fixtures intended for continuous rows are provided with factory installed quick-connect wiring.

#### Controls

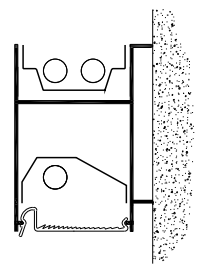
Contact factory for control by Occupancy Sensors, Photo Controls and Daylight Harvesting.

#### Certification

All fixtures are UL/CUL listed for use in 'Dry Applications'. 'Damp Location' is optional.



MLP-I2/D1  
T5 or T5HO



MLP-I2/D1-DLP  
T5 or T5HO

Standard Lengths:  
4', 8' and 12'

Mounting  
W = Wall

Series  
MLP-I2/D1

## MLP-I2/D1-12-W-DC/PB-F01M-V-T5-[ ]

Indirect Optical Controls	Direct Optical Controls	Standard Finishes	Voltage	Lamp Type	Options	Dim
<b>OP</b> Open	<b>PB</b> Semi-Specular Parabolic Baffle	<b>F01M</b> Matte White	120	T5	<b>SS-U/L</b> (Upper/Lower) Lamp Row Switching (Common Neutral Utilized)	<b>Dim</b> Dimming
<b>DC</b> Clear Dust Cover (N/A for T5HO)	<b>PBW</b> White Parabolic Baffle	<b>F01G</b> Gloss White	277	T5HO	<b>NLCKT</b> Separate Night Light Circuit	<b>FS</b> Fused Ballasts
	<b>LP</b> Linear Prismatic Lens	<b>Premium Finishes</b>	347		<b>EMCKT</b> Separate Emergency Circuit	<b>GTD</b> Generator Transfer Device
	<b>DLP</b> Directional Linear Prismatic WW Lens	<b>F02</b> Ivory			<b>EBPL</b> Emergency Battery Pack (635-700 Lumens)	<b>AO</b> White Acrylic Baffle Overlay (N/A with DLP)
	<b>TWA</b> Translucent White Acrylic Lens	<b>F03</b> Stonewash			<b>EBPH</b> Emergency Battery Pack (975-1325 Lumens)	
	<b>FC</b> Frosted Clear Lens	<b>F04</b> Camel				
		<b>F05</b> Gray Day				
		<b>F06</b> Pebble Beach				
		<b>F07</b> Steel				
		<b>F08</b> Gray Seal				
		<b>F09</b> Mocha				
		<b>F10</b> Bronzed				
		<b>F11</b> Black				
		<b>F12</b> Ultrasonic Clear				
		<b>F13</b> Merlot				
		<b>F14</b> Red Skies				
		<b>F15</b> Lemon				
		<b>F16</b> Forest Hunter				
		<b>F17</b> Olive				
		<b>F18</b> Khaki				
		<b>F19</b> Heather Green				
		<b>F20</b> Blue Print				
		<b>F21</b> Reflex Blue				
		<b>F22</b> Navy				
		<b>FCC</b> Custom Color				

To view Wood Grain, Marble and Granite Finishes on our Website see "Products"-"Specialty Finishes".



# MLP-I2/D1

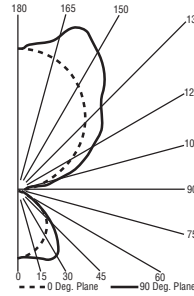
## Indirect/Direct - T5HO Lamps Semi-Specular Aluminum Parabolic Baffle

**Catalog Number:** MLP-I2/D1-4-W-OP/PB-F01M-120-T5HO  
**Report Number:** LTL#13042.ies

**Luminaire Description:** Extruded Aluminum Housing with Specular Aluminum Reflector Up and White Aluminum Reflector Down and Semi-Specular Parabolic Baffle and Open Top

**Lamps:** Three Philips F54T5/850/HO/ALTO Rated at 4400 Lumens Each

Total Luminaire Efficiency = 71.3%  
76% Up 24% Down



### CANDELA DISTRIBUTION LUMENS

	0.0	22.5	45.0	67.5	90.0	
0	960	960	960	960	960	
5	956	956	964	962	966	92
15	906	920	963	999	1018	273
25	822	861	963	1045	1080	441
35	708	784	904	959	985	545
45	561	658	698	662	647	502
55	365	417	346	265	240	298
65	94	93	81	67	56	87
75	23	20	16	17	16	20
85	2	2	2	3	3	3
90	0	0	0	0	0	
95	83	151	132	119	112	135
105	371	518	603	621	625	591
115	704	909	967	1020	1052	939
125	1018	1371	1282	1387	1395	1177
135	1314	1762	1770	1662	1638	1286
145	1559	1884	2117	2099	2096	1240
155	1763	1916	2281	2368	2373	993
165	1896	2003	2078	2191	2244	594
175	1966	1981	2027	2038	2034	193
180	1966	1966	1966	1966	1966	

# MLP-I2/D1

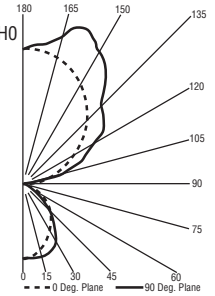
## Indirect/Direct - T5HO Lamps White Aluminum Parabolic Baffle

**Catalog Number:** MLP-I2/D1-4-W-OP/PBW-F01M-120-T5HO  
**Report Number:** LTL#13041.ies

**Luminaire Description:** Extruded Aluminum Housing with Specular Aluminum Reflector Up and White Aluminum Reflector Down and White Parabolic Baffle and Open Top

**Lamps:** Three Philips F54T5/850/HO/ALTO Rated at 4400 Lumens Each

Total Luminaire Efficiency = 72.1%  
75% Up 25% Down



### CANDELA DISTRIBUTION LUMENS

	0.0	22.5	45.0	67.5	90.0	
0	1100	1100	1100	1100	1100	
5	1089	1090	1101	1098	1099	104
15	1000	1011	1047	1077	1089	295
25	870	892	953	1003	1027	437
35	715	746	797	813	827	488
45	534	571	573	544	545	430
55	340	362	338	332	343	308
65	162	165	183	192	202	182
75	85	85	89	96	100	97
85	20	20	22	23	25	25
90	0	0	0	0	0	
95	83	151	132	119	112	135
105	371	518	603	621	625	591
115	704	909	967	1020	1052	939
125	1018	1371	1282	1387	1395	1177
135	1314	1762	1770	1662	1638	1286
145	1559	1884	2117	2099	2096	1240
155	1763	1916	2281	2368	2373	993
165	1896	2003	2078	2191	2244	594
175	1966	1981	2027	2038	2034	193
180	1966	1966	1966	1966	1966	

# MLP-I2/D1

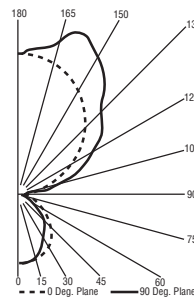
## Indirect/Direct - T5HO Lamps Linear Prismatic Acrylic Lens

**Catalog Number:** MLP-I2/D1-4-W-OP/LP-F01M-120-T5HO  
**Report Number:** LTL#13040.ies

**Luminaire Description:** Extruded Aluminum Housing with Specular Aluminum Reflector Up and White Aluminum Reflector Down and Linear Prismatic Acrylic Lens and Open Top

**Lamps:** Three Philips F54T5/850/HO/ALTO Rated at 4400 Lumens Each

Total Luminaire Efficiency = 70.5%  
77% Up 23% Down



### CANDELA DISTRIBUTION LUMENS

	0.0	22.5	45.0	67.5	90.0	112.5	135.0	157.5	180.0
0	972	972	972	972	972	972	972	972	972
5	971	965	975	970	972	972	92		
15	941	940	944	933	931	265			
25	880	869	842	803	790	385			
35	782	738	673	643	639	433			
45	640	557	517	492	480	409			
55	436	369	324	274	254	294			
65	208	200	163	140	135	169			
75	73	87	86	83	81	89			
85	12	25	30	29	28	29			
90	0	2	4	5	6				
95	83	151	132	119	112	135			
105	371	518	603	621	625	591			
115	704	909	967	1020	1052	939			
125	1018	1371	1282	1387	1395	1177			
135	1314	1762	1770	1662	1638	1286			
145	1559	1884	2117	2099	2096	1240			
155	1763	1916	2281	2368	2373	993			
165	1896	2003	2078	2191	2244	594			
175	1966	1981	2027	2038	2034	193			
180	1966	1966	1966	1966	1966				

# MLP-I2/D1

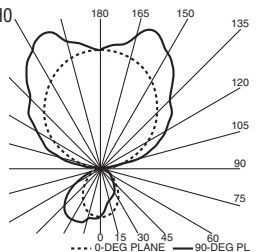
## Indirect/Direct - T5HO Lamps Wall Wash Lens

**Catalog Number:** MLP-I2/D1-4-W-OP/DLP-F01M-120-T5HO  
**Report Number:** LTL#13168.ies

**Luminaire Description:** Extruded Aluminum Housing with Specular Aluminum Reflector Up and Down and Directional Linear Prismatic Acrylic Lens and Open Top

**Lamps:** Three Philips F54T5/850/HO/ALTO Rated at 4400 Lumens Each

Total Luminaire Efficiency = 70.1%  
77% Up 23% Down



### CANDELA DISTRIBUTION LUMENS

	0.0	22.5	45.0	67.5	90.0	112.5	135.0	157.5	180.0	
0	789	789	789	789	789	789	789	789	789	
5	700	705	729	756	788	810	826	828	828	73
15	534	537	576	655	740	803	817	863	871	202
25	477	474	482	515	643	743	872	930	948	310
35	404	405	428	403	508	681	842	925	934	380
45	292	296	326	348	358	605	771	834	835	395
55	224	215	217	252	227	491	629	635	606	345
65	162	152	143	143	136	347	419	384	360	245
75	94	84	76	65	60	170	196	179	164	127
85	26	22	18	12	10	31	36	34	26	29
90	11	11	9	3	1	2	2	2	7	
95	75	161	135	121	112	117	128	141	92	135
105	360	522	600	623	625	619	606	514	383	591
115	694	936	967	1015	1052	1025	967	882	714	939
125	1010	1377	1285	1388	1395	1386	1280	1365	1025	1178
135	1304	1759	1778	1667	1638	1657	1763	1766	1324	1286
145	1552	1848	2122	2101	2096	2096	2112	1920	1566	1240
155	1756	1914	2260	2366	2373	2369	2302	1919	1770	993
165	1897	2002	2074	2175	2244	2207	2081	2004	1894	594
175	1966	1972	2021	2034	2034	2042	2032	1991	1966	193
180	1968	1968	1968	1968	1968	1968	1968	1968	1968	

Note: See Website for additional Photometric Reports.



Precision Architectural Lighting 4830 Timber Creek Drive Houston, Texas 77017  
Tel 713.946.4343 Fax 713.946.4441 www.pal-lighting.com