

Microlinea Series™

Catalog Number	Type
Project Name	

MLS-I1/D2•MLS-I2/D2

3 1/8" x 5" Indirect/Direct
(T5 Lamps)

Shown with Linear Prismatic Lens



Shown with White Parabolic Baffle

S P E C I F I C A T I O N S

Housing

One-piece .080" thick extruded aluminum. Die-cast aluminum end caps are secured with no visible fasteners. Standard lengths are 4', 8' and 12'. Provisions may be made for patterns and continuous rows of any length.

Finish

Standard and premium finishes are baked powder coat electrostatically applied (2.0 mil minimum thickness) to assure aesthetics and durability. Standard finish for stems and canopies is white.

Indirect Optical Controls

- (OP) Open
- (DC) Clear extruded 100% DR acrylic dust cover

Direct Optical Controls

- (PB) 3/4" deep semi-specular aluminum parabolic baffle with blades on 1 1/2" centers
- (PBW) 3/4" deep white aluminum parabolic baffle with blades on 1 1/2" centers
- (LP) Clear extruded 100% DR acrylic linear prismatic lens
- (TWA) Translucent white extruded 100% DR acrylic lens

Reflectors

- Indirect - Die-formed from .020" thick high reflectance specular aluminum.
- Direct - Die-formed from .020" thick aluminum and finished with a high reflectance white enamel.

Ballast

Standard ballasts for T5 lamps are UL/CUL listed, Class P, HPF, electronic, universal 120/277volt, programmed rapid start with <10% THD.

Circuitry

All fixtures are factory pre-wired for a single circuit. Provision for multiple switching/circuiting is optional.

Wiring

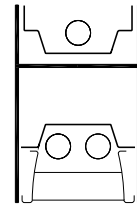
All fixtures intended for continuous rows are provided with factory installed quick-connect wiring.

Controls

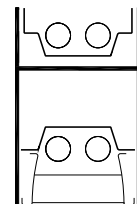
Contact factory for control by Occupancy Sensors, Photo Controls and Daylight Harvesting.

Certification

All fixtures are UL/CUL listed for use in 'Dry Applications'. 'Damp Location' is optional.



MLS-I1/D2
T5



MLS-I2/D2
T5

Series MLS-I1/D2 MLS-I2/D2	Standard Lengths: 4', 8' and 12'	Mounting CT = Cable (15/16" Tbar) Fully Adjustable (36" Standard) CN = Cable (Non-Tbar) Fully Adjustable (36" Standard) P = Rigid Stem (Up to 48" Standard) K = Swivel Stem (Up to 48" Standard)
---	--	---

MLS-I2/D2-12-CT-DC/PB-F01M-V-T5-[]

Indirect Optical Controls	Direct Optical Controls	Standard Finishes	Voltage	Lamp Type	Options
OP Open	PB Semi-Specular Parabolic Baffle	F01M Matte White	120	T5	SS-U/L (Upper/Lower) Lamp Row Switching (Common Neutral Utilized)
DC Clear Dust Cover	PBW White Parabolic Baffle	F01G Gloss White	277		NLCKT Separate Night Light Circuit
	LP Linear Prismatic Lens	Premium Finishes	347		EMCKT Separate Emergency Circuit
	TWA Translucent White Acrylic Lens	F02 Ivory			EBPL Emergency Battery Pack (635-700 Lumens)
		F03 Stonewash			EBPH Emergency Battery Pack (975-1325 Lumens)
		F04 Camel			
		F05 Gray Day			
		F06 Pebble Beach			
		F07 Steel			
		F08 Gray Seal			
		F09 Mocha			
		F10 Bronzed			
		F11 Black			
		F12 Ultrasonic Clear			
		F13 Merlot			
		F14 Red Skies			
		F15 Lemon			
		F16 Forest Hunter			
		F17 Olive			
		F18 Khaki			
		F19 Heather Green			
		F20 Blue Print			
		F21 Reflex Blue			
		F22 Navy			
		FCC Custom Color			

To view Wood Grain, Marble and Granite Finishes on our Website see "Products"-"Specialty Finishes".



MLS-I1/D2

Indirect/Direct - T5 Lamps

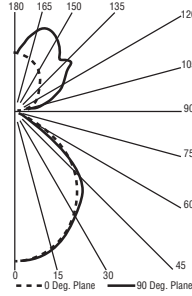
Semi-Specular Aluminum Parabolic Baffle

Catalog Number: MLS-I1/D2-4-X-OP/PB-F01M-120-T5
Report Number: LTL#13045.ies

Luminaire Description: Extruded Aluminum Housing with Specular Aluminum Reflector Up and White Aluminum Reflector Down and Semi-Specular Parabolic Baffle and Open Top

Lamps: Three Philips F28T5/835/ALTO
 Rated at 2610 Lumens Each

Total Luminaire Efficiency = 60.3%
 48% Up 52% Down



CANDELA DISTRIBUTION

		LUMENS				
		0.0	22.5	45.0	67.5	90.0
0	1217	1217	1217	1217	1217	
5	1212	1212	1218	1212	1214	115
15	1144	1150	1167	1166	1168	327
25	1033	1040	1041	1050	1060	481
35	886	881	880	892	919	557
45	697	683	686	715	729	536
55	441	419	393	323	284	335
65	108	102	90	75	61	95
75	27	22	18	19	19	23
85	3	3	3	3	3	4
90	0	0	0	0	0	
95	16	67	58	58	53	57
105	82	174	224	262	283	225
115	157	275	345	378	385	316
125	231	423	473	484	490	390
135	300	511	539	544	592	397
145	358	542	656	668	647	370
155	406	524	666	713	724	285
165	438	486	578	638	657	160
175	456	454	470	481	486	46
180	451	451	451	451	451	

MLS-I1/D2

Indirect/Direct - T5 Lamps

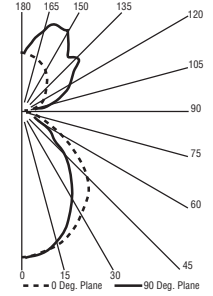
Linear Prismatic Acrylic Lens

Catalog Number: MLS-I1/D2-4-X-OP/LP-F01M-120-T5
Report Number: LTL#13043.ies

Luminaire Description: Extruded Aluminum Housing with Specular Aluminum Reflector Up and White Aluminum Reflector Down and Linear Prismatic Acrylic Lens and Open Top

Lamps: Three Philips F28T5/835/ALTO
 Rated at 2610 Lumens Each

Total Luminaire Efficiency = 59.0%
 49% Up 51% Down



CANDELA DISTRIBUTION

		LUMENS				
		0.0	22.5	45.0	67.5	90.0
0	1137	1137	1137	1137	1137	
5	1131	1129	1133	1126	1129	107
15	1088	1081	1074	1060	1060	303
25	1003	987	964	922	907	440
35	874	844	762	694	678	480
45	699	631	538	492	478	433
55	473	401	333	283	265	311
65	222	216	171	146	140	179
75	78	94	93	88	85	94
85	13	27	32	30	29	30
90	0	2	4	6	6	
95	16	67	58	58	53	57
105	82	174	224	262	283	225
115	157	275	345	378	385	316
125	231	423	473	484	490	390
135	300	511	539	544	592	397
145	358	542	656	668	647	370
155	406	524	666	713	724	285
165	438	486	578	638	657	160
175	456	454	470	481	486	46
180	451	451	451	451	451	

MLS-I2/D2

Indirect/Direct - T5 Lamps

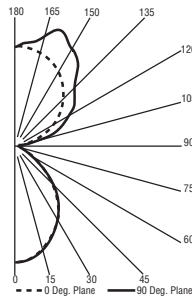
White Aluminum Parabolic Baffle

Catalog Number: MLS-I2/D2-4-X-OP/PBW-F01M-120-T5
Report Number: LTL#13047.ies

Luminaire Description: Extruded Aluminum Housing with Specular Aluminum Reflector Up and White Aluminum Reflector Down and White Parabolic Baffle and Open Top

Lamps: Four Philips F28T5/835/ALTO
 Rated at 2610 Lumens Each

Total Luminaire Efficiency = 66.1%
 63% Up 37% Down



CANDELA DISTRIBUTION

		LUMENS				
		0.0	22.5	45.0	67.5	90.0
0	1321	1321	1321	1321	1321	
5	1306	1307	1318	1312	1313	124
15	1194	1201	1224	1227	1230	342
25	1034	1040	1033	1040	1054	479
35	843	832	818	836	868	522
45	623	604	604	605	613	468
55	380	375	367	341	339	324
65	171	175	188	191	197	185
75	91	91	93	98	102	100
85	21	21	23	24	25	26
90	0	0	0	0	0	
95	47	86	71	66	62	80
105	223	314	374	378	379	359
115	429	544	592	632	652	574
125	623	833	774	846	852	715
135	798	1068	1072	1000	985	778
145	947	1141	1281	1273	1271	751
155	1066	1142	1379	1434	1438	599
165	1149	1197	1242	1324	1362	357
175	1192	1191	1219	1228	1229	116
180	1188	1188	1188	1188	1188	

MLS-I2/D2

Indirect/Direct - T5 Lamps

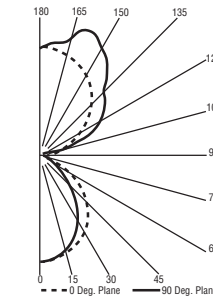
Linear Prismatic Acrylic Lens

Catalog Number: MLS-I2/D2-4-X-OP/LP-F01M-120-T5
Report Number: LTL#13046.ies

Luminaire Description: Extruded Aluminum Housing with Specular Aluminum Reflector Up and White Aluminum Reflector Down and Linear Prismatic Acrylic Lens and Open Top

Lamps: Four Philips F28T5/835/ALTO
 Rated at 2610 Lumens Each

Total Luminaire Efficiency = 64.2%
 65% Up 35% Down



CANDELA DISTRIBUTION

		LUMENS				
		0.0	22.5	45.0	67.5	90.0
0	1137	1137	1137	1137	1137	
5	1131	1129	1133	1126	1129	107
15	1088	1081	1074	1060	1060	303
25	1003	987	964	922	907	440
35	874	844	762	694	678	480
45	699	631	538	492	478	433
55	473	401	333	283	265	311
65	222	216	171	146	140	179
75	78	94	93	88	85	94
85	13	27	32	30	29	30
90	0	2	4	6	6	
95	47	86	71	66	62	80
105	223	314	374	378	379	359
115	429	544	592	632	652	574
125	623	833	774	846	852	715
135	798	1068	1072	1000	985	778
145	947	1141	1281	1273	1271	751
155	1066	1142	1379	1434	1438	599
165	1149	1197	1242	1324	1362	357
175	1192	1191	1219	1228	1229	116
180	1188	1188	1188	1188	1188	

Note: See Website for additional Photometric Reports.

