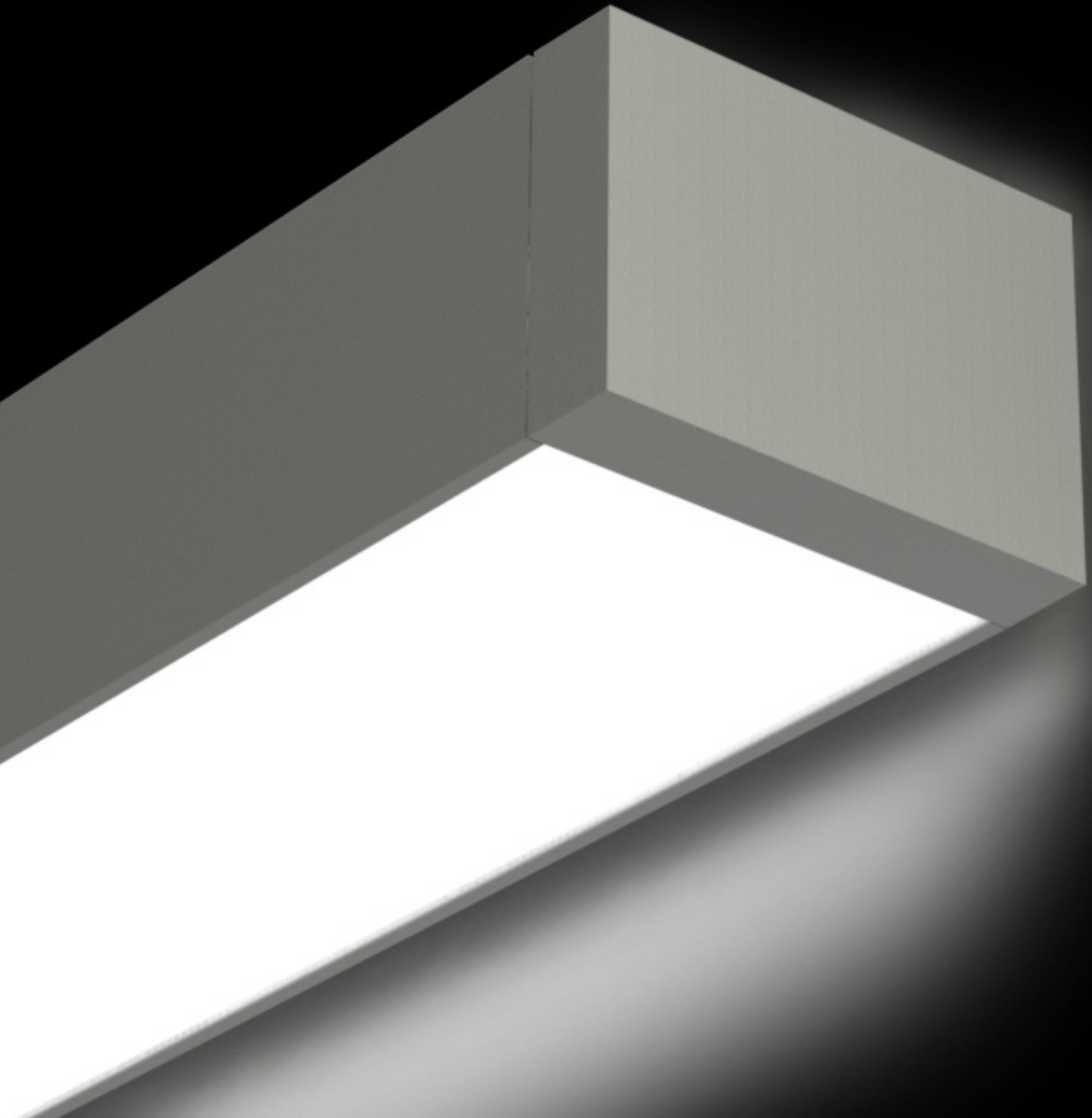


**PAL**  
ARCHITECTURAL

MICROLINEA™  
SERIES 5



The Microlinea Series 5 continues the features and precision quality of the Series 2 and the Series 3 – but in a larger, more robust platform. The ML5 Series offers excellent performance, design flexibility and quality construction – all hallmarks of the entire Microlinea family of fixtures.



## FEATURES

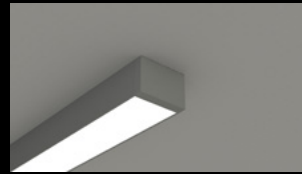
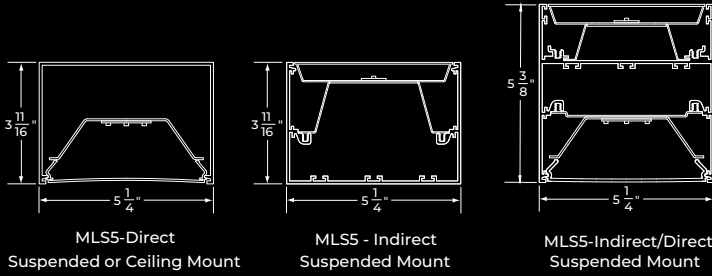
- Available in Suspended, Recessed, Ceiling, and Wall Mount configurations.
- Constructed of extruded aluminum housings to ensure straight, rigid individual fixtures and continuous rows.
- Available with standard or custom light outputs, multiple switching/circuiting, and various dimming options.
- A variety of lens options are available, including flush lenses, regressed lenses, and even wide-distribution optics.
- Along with standard white light sources, the ML5 Series is available in both Tunable White and RGBW color options.
- Lit and unlit corners and connectors are available providing fixture pattern opportunities. Custom angle corners are also available – Contact Factory.
- ML5 Series recessed fixtures can be installed into most ceiling types, including the 6" Armstrong TechZone grid ceilings.
- Optional upper wide-spread optic system is available providing superior uniformity and greater lighting efficacy.



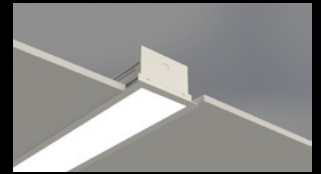
Series/Mounting	Distributions	Standard Outputs	Delivered Lumens/Ft	Efficacies
MLS5-Direct Suspended MLS5-Direct Ceiling (Flush Lens)		HO - High Output MO - Medium Output	908 Lms/Ft 558 Lms/Ft	117 Lms/W 122 Lms/W
MLS5-Indirect/Direct Suspended (Flush Lens)		HO/HO - High Output (Up and Down) MO/MO - Medium Output (Up and Down)	2001 Lms/Ft 1199 Lms/Ft	120 Lms/W 128 Lms/W
MLS5-Indirect Suspended (Flush Lens)		HO - High Output MO - Medium Output	1065 Lms/Ft 636 Lms/Ft	127 Lms/W 136 Lms/W
MLR5-Direct Recessed (Flush Lens)		HO - High Output MO - Medium Output	908 Lms/Ft 558 Lms/Ft	117 Lms/W 122 Lms/W
MLP5-Direct Wall (Flush Lens)		HO - High Output MO - Medium Output	908 Lms/Ft 558 Lms/Ft	117 Lms/W 122 Lms/W
MLP5-Indirect- Asymmetric Wall (Flush Lens)		HO - High Output MO - Medium Output	976 Lms/Ft 665 Lms/Ft	139 Lms/W 144 Lms/W
MLP5-Indirect-Direct Wall (Flush Lens)		HO/HO - High Output (Up and Down) MO/MO - Medium Output (Up and Down)	2001 Lms/Ft 1199 Lms/Ft	120 Lms/W 128 Lms/W
MLR5-Direct Recessed (Regressed Lens)		HO - High Output MO - Medium Output	869 Lms/Ft 519 Lms/Ft	118 Lms/W 121 Lms/W

# MICROLINEA SERIES 5

## Flush Lenses CEILING AND SUSPENDED MOUNT

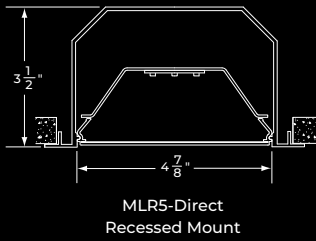


CEILING MOUNT

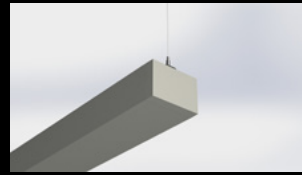


RECESSED

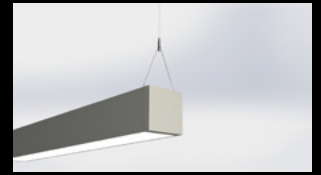
## RECESSED MOUNT



MLR5-Direct  
Recessed Mount

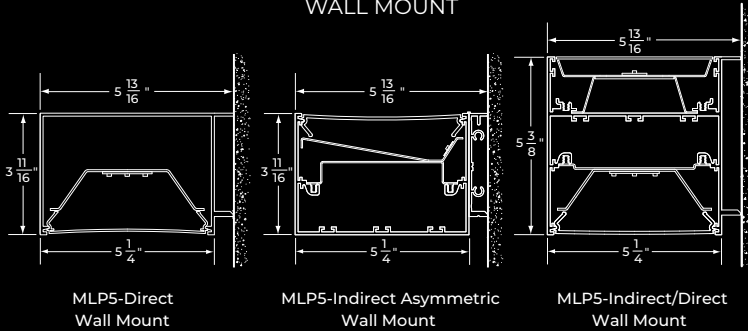


SUSPENDED INDIRECT



SUSPENDED INDIRECT/DIRECT

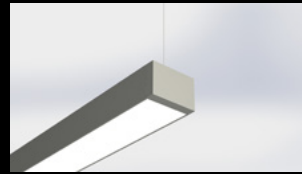
## WALL MOUNT



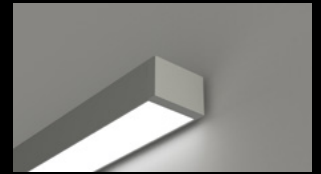
MLP5-Direct  
Wall Mount

MLP5-Indirect Asymmetric  
Wall Mount

MLP5-Indirect/Direct  
Wall Mount



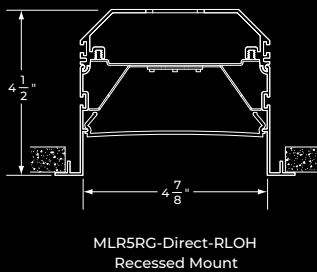
SUSPENDED DIRECT



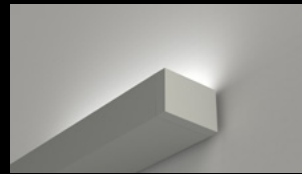
WALL MOUNT DIRECT

## Regressed Lens

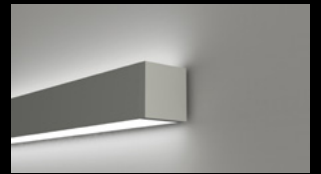
### RECESSED MOUNT



MLR5RG-Direct-RLOH  
Recessed Mount



WALL MOUNT INDIRECT



WALL MOUNT INDIRECT/DIRECT



4830 Timber Creek Drive,  
Houston, TX 77017  
P: 713.946.4343  
F: 713.946.4441  
www.pal-lighting.com

**PAL**  
ARCHITECTURAL